



Trex® Outdoor Lighting™
UP YOUR OUTDOOR AMBIENCE

Trex® Outdoor Lighting™



*Meet the light
of the party*

With the right light, you can take any outdoor space from invisible to inviting. That's why Trex offers a range of lighting options that cast a warm glow on various deck areas—from stairs to railing posts to deck perimeters.

Trex® OutdoorLighting™ enhances curb appeal with energy-efficient illumination that makes for safer nighttime strolls and impressive deckside ambience. Best of all, the lights install in a snap and disappear into their surroundings for a truly sophisticated look.

High performance

- » Energy-efficient CREE® LEDs give off long-lasting illumination*
- » Dimmable glow matches the mood of any outdoor party or dinner
- » Remains weather-proof and salt-air resistant in the toughest climates
- » Offers total lighting control via timer and optional dimmer with remote

Perennial beauty

- » Sophisticated fixtures create custom lighting effects and designs
- » Ambient light improves the safety of surfaces and stairways
- » Out of sight during the day, beautiful light every night
- » Available in a variety of colors to complement any outdoor space

Trex® through and through

- » Part of a complete Trex package
- » Trex LightHub® connection system makes set-up a snap for DIYers
- » Lighting builds into new decks or retrofits into existing spaces
- » Earth-friendly LEDs are up to 9.1 times more efficient than incandescent lighting
- » Protected under warranty for years of outdoor use**

Set up and control your deck lights with the Trex LightHub connection system. Installation videos are available at [trex.com](https://www.trex.com)



Top to bottom brilliance

Lit at every level, courtesy of post cap lights, stair riser lights and recessed deck lights.



Step by step

Stair riser lights shine bright in groupings of two.

*CREE® is a registered trademark of Cree, Inc.

**For the terms of warranties on Trex® OutdoorLighting™, see page 14 or visit [trex.com](https://www.trex.com)



POST CAP LIGHT

Tucked discreetly under the cap, post cap lights provide a warm downward glow and easy wayfinding.



DECK RAIL LIGHT

These indirect lights reside directly on the rail post to illuminate the beautiful deck below.



STAIR RISER LIGHT

Installed into step risers, these lights are durable enough to handle years of passing foot traffic.



RECESSED DECK LIGHT

These subtle dot lights install flush on the deck boards to efficiently light the way.



WEDGE DECK RAIL LIGHT

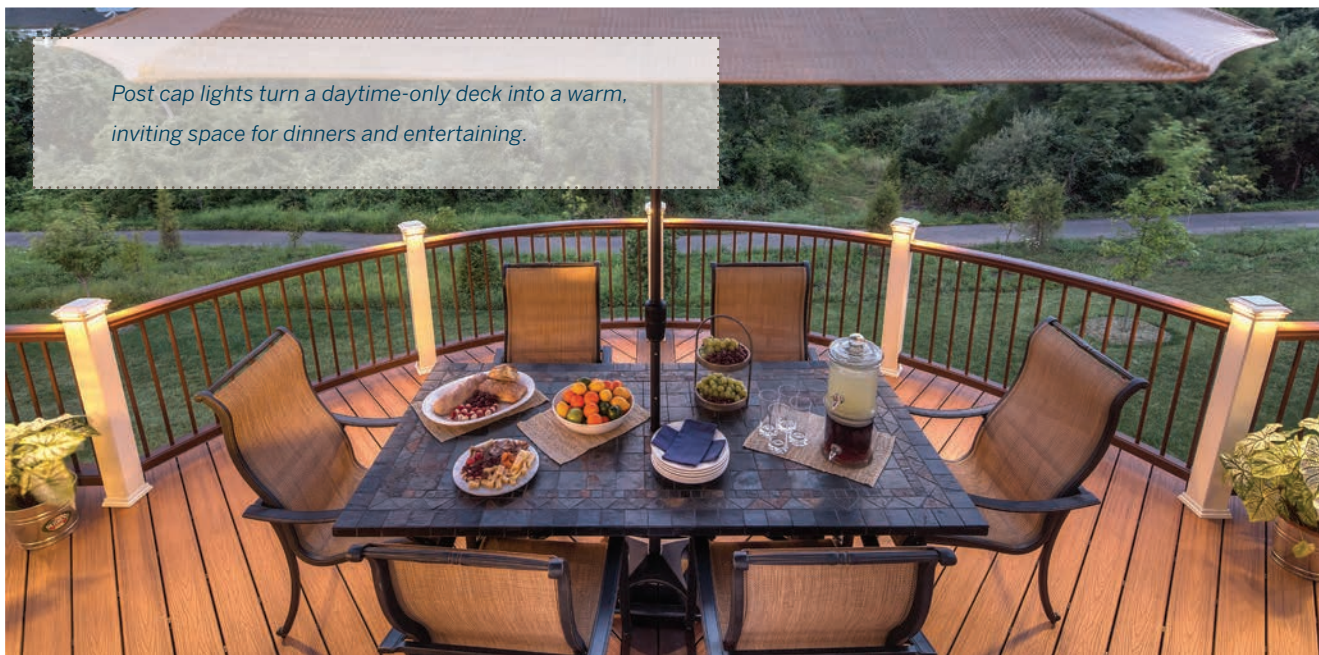
Sleek and understated, this versatile post lamp can be installed on 2.5-inch aluminum posts as well as composite sleeves.



ALUMINUM POST CAP LIGHT

Shining in all directions, aluminum post cap lights work seamlessly with Trex® Signature™ 2.5-inch aluminum posts.

Post cap lights turn a daytime-only deck into a warm, inviting space for dinners and entertaining.



Trex Outdoor Lighting

LIGHTING & DESCRIPTION

ITEM NUMBER

DECK LIGHTING

Pyramid or Flat Post Cap Light

- » 4" x 4" LED Post Cap Light
[4.55 in x 4.55 in (115 mm x 115 mm) actual internal dimensions]
Use with Trex 4 in Composite Railing Posts
- » 5.5 ft (1.67 m) Male LightHub® Lead

Aluminum Post Cap Light

- » 2.5" x 2.5" LED Aluminum Post Cap Light
[2.6 in x 2.6 in (66 mm x 66 mm) actual internal dimensions]
Use with Trex 2.5 in Aluminum Railing Posts
- » 5.5 ft (1.67 m) Male LightHub Lead



PYRAMID CAPS

BKPYLEDCAP4X4C
WTPYLEDCAP4X4C
FPPYLEDCAP4X4C
THPYLEDCAP4X4C
VLPYLEDCAP4X4C
GPPYLEDCAP4X4C
RSPYLEDCAP4X4C

FLAT CAPS

BKSQLEDCAP4X4C
WTSQLEDCAP4X4C
FPSQLEDCAP4X4C
THSQLEDCAP4X4C
VLSQLEDCAP4X4C
GPSQLEDCAP4X4C
RSSQLEDCAP4X4C
TEXTURED CHARCOAL BLACK: BKALCAPLED25
TEXTURED BRONZE: BZALCAPLED25
TEXTURED WHITE: WTALCAPLED25

Deck Rail Light

- » LED Deck Rail Light
[2.75 in (69 mm) OD]
- » 5.5 ft (1.67 m) Male LightHub Lead



TEXTURED CHARCOAL BLACK: BKLAMPLEDC
TEXTURED BRONZE: BZLAMPLEDC
TEXTURED CLASSIC WHITE: WTLAMPLEDC

Wedge Deck Rail Light

- » LED Wedge Deck Rail Light
[1.875 in wide x 3 in high (47 mm x 76 mm) actual dimensions]
Compatible with all Trex Railing Posts
- » 5.5 ft (1.67 m) Male LightHub Lead



TEXTURED CHARCOAL BLACK: BKALPOSTLAMPLED
TEXTURED BRONZE: BZALPOSTLAMPLED
TEXTURED CLASSIC WHITE: WTALPOSTLAMPLED

LED Riser Lights

- » 4 LED Riser Lights
[1.25 in (31 mm) OD]
- » 5.5 ft (1.67 m) Male LightHub Lead



TEXTURED CHARCOAL BLACK: BKRISERLED4PKC
TEXTURED BRONZE: BZKRISERLED4PKC
TEXTURED CLASSIC WHITE: WTRISERLED4PKC

Recessed Deck Lights

- » 4 LED Recessed Lights
[1 in (25 mm) OD]
- » 5.5 ft (1.67 m) Male LightHub Lead



RECESSLED4PKC

ACCESSORIES

Transformer with Timer

- » Output Voltage: 12VDC
- » Output Power: 100W or 30W
- » Output Current: 8.3A or 2.5A
- » Photo-Activated Timer
- » 20 ft (6.09 m) LightHub Wire Extension Cable



8.3A, 100W: 83DLTRANSFORMER
2.5A, 30W: 25DLTRANSFORMER

Multi-zone Transformer Adapter



DL5TFSPPLIT1PK

Dimmer

- » Single Channel with Remote



DLDIMMER

1 in (25 mm) Forstner Bit—Pack of 6



DLBIT6PK

LightHub Accessories

- » 3-Way Splitter
- » 6-Way Splitter
- » 5 ft (1.52 m) Wire Extension Cable
- » 10 ft (3.04 m) Wire Extension Cable
- » 20 ft (6.09 m) Wire Extension Cable
- » 40 ft (12.19 m) Wire Extension Cable
- » 60 ft (18.28 m) Wire Extension Cable
- » Female to Female Adapter

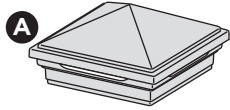


DL3SPLIT6PK
DL6SPLIT4PK
DL5FTWR4PK
DL10FTWR4PK
DL20FTWR4PK
DL40FTWR2PK
DL60FTWR1PK
DLFADAP6PK

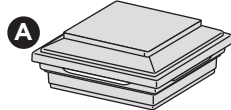
TREX® DECKLIGHTING™ INSTALLATION INSTRUCTIONS

HOW TO INSTALL TREX® DECKLIGHTING™

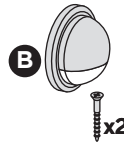
PARTS



Pyramid Post Cap Light



Flat Post Cap Light



Deck Rail Light



Riser Light



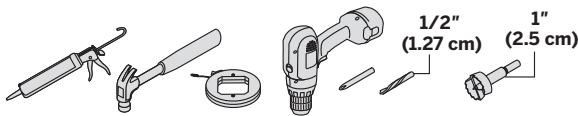
Recessed Deck Light



Splitter

» 5ft, 10ft, 20ft, 40ft, and 60ft connection/extension wires sold separately (these are male-to-male connection wires).

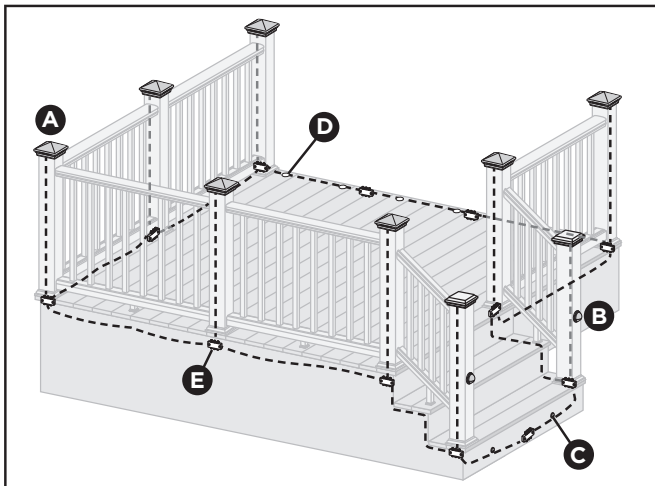
TOOLS NEEDED



WARNING:

- DO NOT INSTALL DECKLIGHTING IN CLOSE PROXIMITY TO POOLS OR HOT TUBS AS CHEMICALS FROM THE WATER CAN DAMAGE LIGHTING FIXTURES.
- DO NOT INSTALL WIRING UNDER HEAVY WEIGHT OR LOAD AS THIS CAN DAMAGE WIRING.

Lighting and Wiring Overview



NOTE: All wiring and splitters are mounted to inside of framing; picture shows a general representation of where to place them.

NOTE: Avoid railing brackets and locations for deck rail lights when running wires up posts.

NOTE: It is recommended to install wiring and splitters before decking and railing have been installed. **DO NOT** run wires between joists and deck boards.

HELPFUL TIPS

- » Leave slack in wire to make fixture terminations.
- » Recessed lights work well spaced 4' (1.22 m) to 6' (1.83 m) on center around perimeter of deck.
- » Deck rail lights work well at changes in levels of a deck—at the top or the bottom of the stairs, or in conjunction with post cap lights.
- » Recommended riser light placement is two lights per standard width tread. Otherwise, spacing of 2' to 3' is considered optimal.
- » Drill holes perpendicular to the surface, being careful to hold drill steady, to avoid producing an enlarged hole. If hole is enlarged, light fixture will have a loose fit. Use of a flexible outdoor semi-permanent adhesive (silicone caulk) may be required to anchor light in place.
- » Riser and deck rail light holes can be through holes. However, recessed light holes should be drilled to a depth of 3/4" (1.9 cm). Over-drilled recessed light holes will require use of silicone caulk to anchor light in place.
- » Splitters should be placed under the deck at the base of each post that has lighting installed. If not installing lighting on posts, splitter spacing will be dependent on spacing of light fixtures.
- » Cap all unused female connections with caps provided or weather-resistant silicone to prevent water damage or corrosion.
- » The splitter is cross linked so there is no specified plug for lights versus lead wires.
- » Leads attached to each light are approximately 5' 6" (1.5 m to 1.8 m) in length and have male terminals to plug into splitter.
- » Use a separate dimmer control for each light type for maximum control (5-way transformer splitter may be required).
- » It is recommended to have power source installed and turned on when installing lights to ensure all components work.

Have Questions?

1-800-BUY-TREX

Note: Construction methods are always improving.

Please ensure you have the most up-to-date installation instructions by visiting trex.com

TDL-1015

TREX® DECKLIGHTING™ INSTALLATION INSTRUCTIONS

HOW TO INSTALL TREX® DECKLIGHTING™/CONTINUED

General Information

- » Refer to www.trex.com for instructional videos on how to install Trex Decklighting
- » **USE TREX TRANSFORMER ONLY.** Use of any other transformer voids warranty.

TRANSFORMER CAPACITY BY TYPE

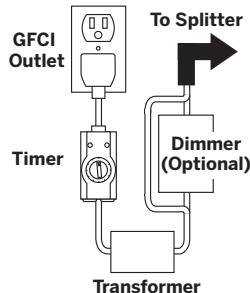
Type of Light	8.3A Transformer (83 DL TRANSFORMER)	2.5A Transformer (2.5 DL TRANSFORMER)
Riser	285	90
Recessed	285	90
Post Cap	85	22
Deck Rail	285	90

Above listing is for maximum number of each individual types of lights. If mixing and matching lighting, contact Trex to determine if more than one transformer is required.

Planning

NOTE: When designing your deck, plan locations of lights, power supply, timer, and dimmer. These should be accessible for service. Installing a GFCI outlet is **REQUIRED** to help prevent damage to lighting from electrical surges.

1. The dimmer remote will work in a 30' (9 m) radius of the unit.
2. Dimmer should be installed in a dry location.
3. Timer must be installed vertically with receptacle facing downwards. Timer must be at least 1' (.305 m) from ground level when installed as per federal safety code height regulations. Timer must be in view of the sun to use the dusk/dawn feature.

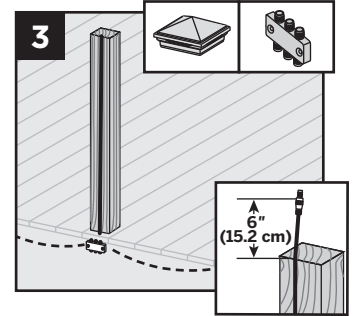
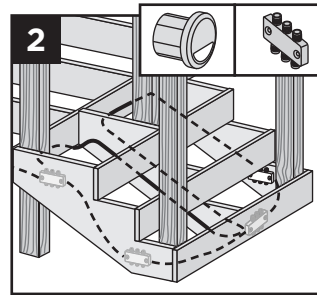
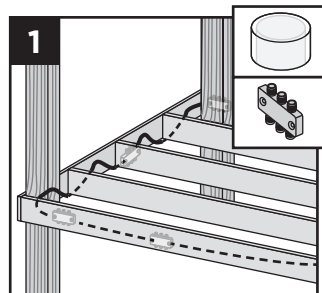


Installing Wiring

NOTE: It is recommended to install wiring and splitters before decking and railing have been installed.

- » Use male-to-male connection wire (lengths vary) that will connect to each required splitter.

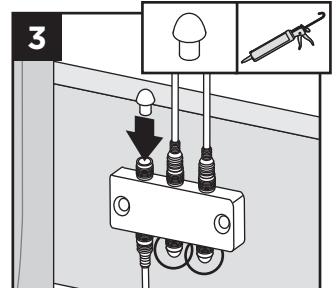
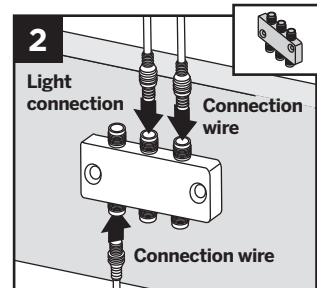
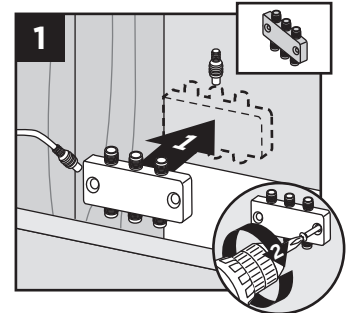
1. Wiring must be run under decking structure and behind stringers. **DO NOT** run wires between deck boards and joists. Staple to frame with cable staples at least 1/4" (0.6 cm) wide. **DO NOT** crush wire insulation with staple.



2. Wiring can be run under deck and behind risers. Staple to frame with cable staples at least 1/4" (0.6 cm) wide. **DO NOT** crush wire insulation with staple.
3. Remove 5' (1.52 m) lead wire that is connected to post cap and attach wire to post with male connection at top of post (female connection would be at bottom of post and connect into splitter). Avoid running wire on side of post where railing brackets or deck rail lights will be installed. Leave approximately 6" (15.2 cm) of lead at top to make connections. Staple to frame and posts with cable staples at least 1/4" (0.6 cm) wide. **DO NOT** crush wire insulation with staple.

Making Connections

1. Install splitters to inside of framing using hardware provided. Install at every post base where lighting is present and depending on spacing in between each riser and recessed light.



2. Attach male lead from lights to female connections on splitter. Also attach male-to-male connection wires in between each splitter. Continue until all wiring from lights are attached to splitters and connector wires are attached in between splitters.
3. Cap off all unused female connections on splitters using caps provided or weather-resistant silicone.

TREX® DECKLIGHTING™ INSTALLATION INSTRUCTIONS

HOW TO INSTALL TREX® DECKLIGHTING™/CONTINUED

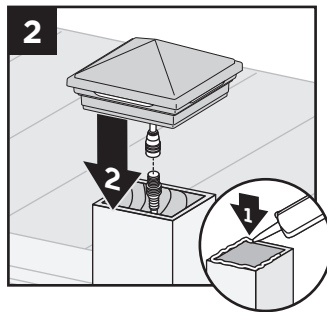
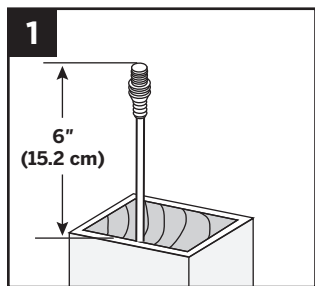
Timer Operation Instructions

1. Select the mode of operation:
 - » Dusk to Dawn
 - » 2 - 8 hours
 - » Always "ON"
 - » "OFF"

Program repeats daily. When power is flowing to lights, green light above POWER is on.

Installing Post Cap Lights

NOTE: Install post cap lights after the railing system, post sleeve skirt, and post sleeve have been installed.

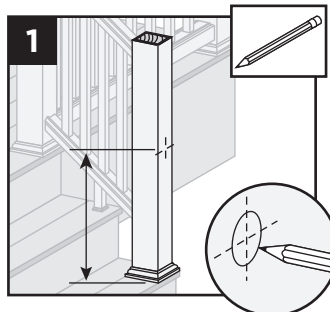


1. Connect male lead from wiring to female connector from cap. Also attach male-to-male connection wires in between each splitter. Continue until all wiring from lights are attached to splitters as well as connector wires are attached in between splitters. (See *Making Connections* section for details.)
2. After verifying wiring is correct by turning lights on, attach cap to top of post with silicone caulk.

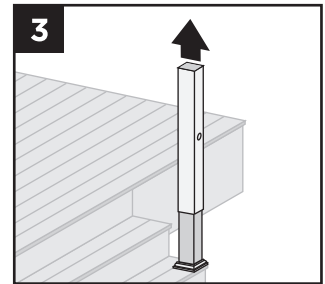
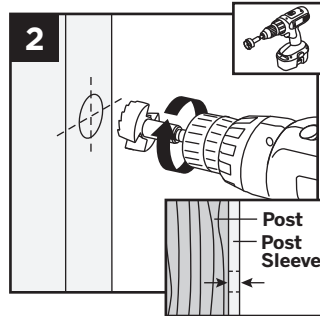
Installing Deck Rail Lights

NOTE: Instructions shown below are for new deck installation and are shown **BEFORE** railing system has been installed.

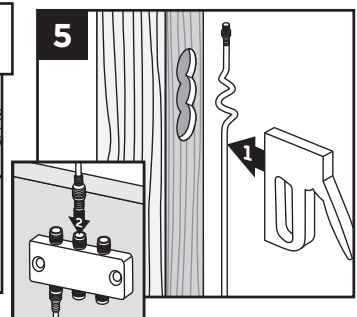
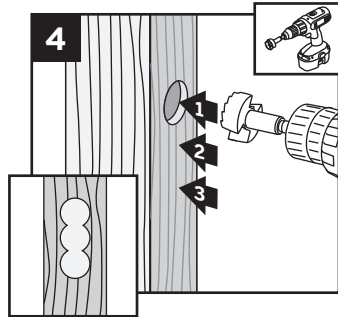
1. Place post sleeve over pressure-treated post and mark desired height, centered on post sleeve for deck rail light location.



NOTE: If deck boards are not installed yet, place a deck board on framing to ensure post sleeve is at correct height.



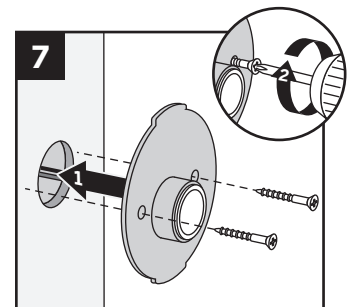
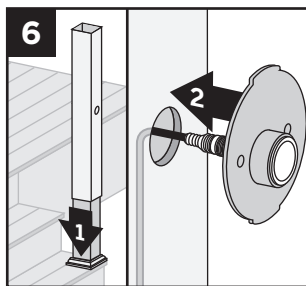
2. Drill a 1" (2.5 cm) hole through post sleeve. Drill deep enough to mark location on pressure treated post.
3. Remove the post sleeve from the post.



4. Drill out existing hole on pressure treated post 3/4" deep. Drill two additional holes vertically below main hole - this will allow space for wiring after post sleeve is attached.
5. Leave enough slack at top of lead wire and attach lead wire to post using staples. Attach lead wire to splitter under decking.

TIP: Use painters tape to hold lead wire in place at drilled out location.

Installing Deck Rail Lights

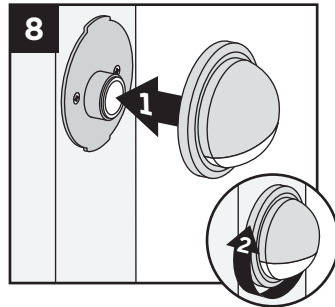


6. Slide post sleeve back over post. If using a post sleeve skirt, make sure to install the skirt first. Connect plug on deck rail light to lead wire and tuck wiring into previously drilled out pockets on post.
7. Align holes for screws horizontally and attach fixture base to post with provided screws.

TREX® DECKLIGHTING™ INSTALLATION INSTRUCTIONS

HOW TO INSTALL TREX® DECKLIGHTING™/CONTINUED

8. Line up polycarbonate lens with fixture housing. Twist onto fixture base. Continue until all wiring from lights is attached to splitters and connector wires are attached in between splitters. (See Making Connections section for details.)



female connection on splitter. Also attach male-to-male connection wires in between each splitter. Continue until all wiring from lights is attached to splitters and connector wires are attached in between splitters. (See *Making Connections* section for details.)

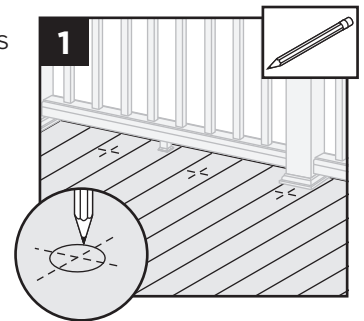
NOTE: DO NOT install riser light or deck rail light into top or bottom rails or balusters.

Installing Recessed Deck Lights

NOTE: Install recessed deck lights after installing decking.

1. Mark locations for lights in deck boards.

NOTE: If possible, avoid locations over joists as holes will be more difficult to create.

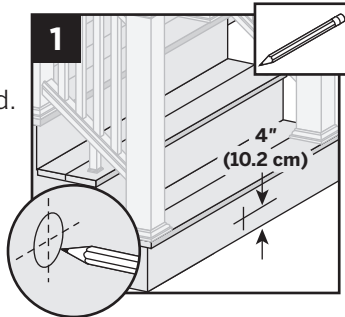


Installing Riser Lights

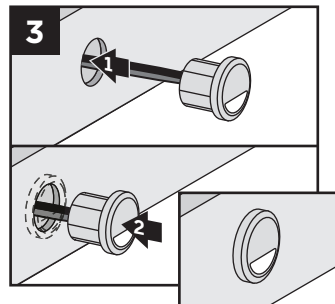
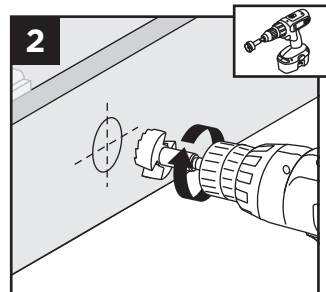
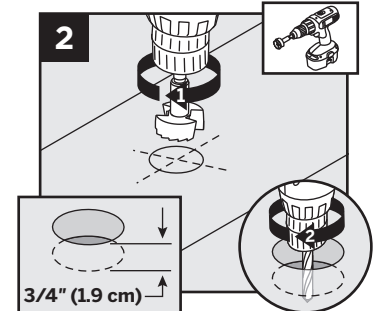
NOTE: Install riser lights after stairs and risers have been installed.

1. Mark locations for each light, generally 4" (10.2 cm) above tread. Consult local codes for lighting requirements.

NOTE: If possible, avoid locations over stringers as holes will be more difficult to create.

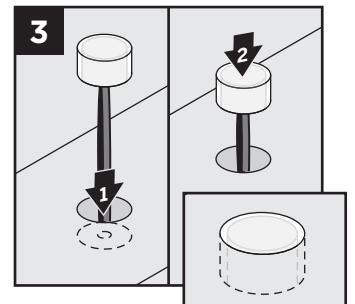


2. Drill a 1" (2.5 cm) diameter hole 3/4" (1.9 cm) deep into deck board. Hole cannot go all the way through deckboard or light will fall through. Make sure drill bit is perpendicular to board. Drill a 1/2" (1.27 cm) diameter hole in base of the first hole through deck board.



2. Drill a 1" (2.5 cm) diameter hole at least 1" (2.5 cm) deep into riser. If riser material is thicker than 1" (2.5 cm), use a 1/2" (1.27 cm) drill bit to create a passage for wires.
3. Thread wires through hole. Press light into hole, ensuring lens is horizontal. Make connections behind stairs from male lead wire from recessed light into

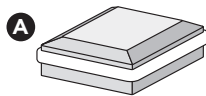
3. Thread wires through hole. **DO NOT pull LED into hole by pulling on wires. This may damage wires or LED.** Press light into hole until flush with surface. Make connections under deck from male lead wire from riser light into female connection on splitter. Also attach male-to-male connection wires in between each splitter. Continue until all wiring from lights are attached to splitters and connector wires are attached in between splitters. (See *Making Connections* section for details.)



TREX® SIGNATURE™ POST CAP LIGHT INSTALLATION INSTRUCTIONS

HOW TO INSTALL TREX® SIGNATURE™ POST CAP LIGHT

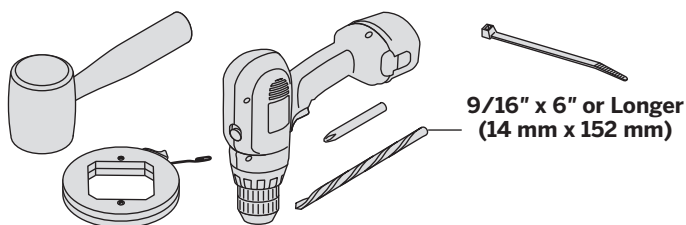
PARTS



Post Cap Light

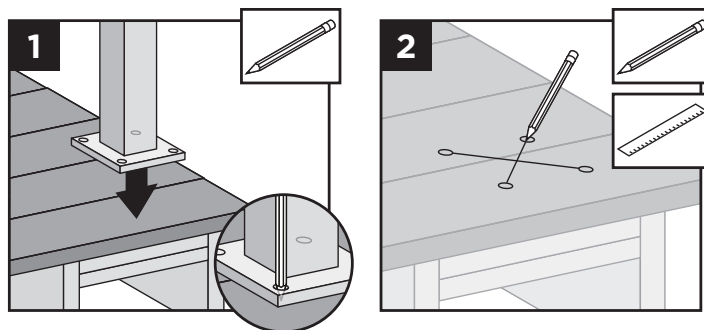
- » 5ft, 10ft, 20ft, 40ft, and 60ft connection/extension wires sold separately (these are male-to-male connection wires).

TOOLS NEEDED

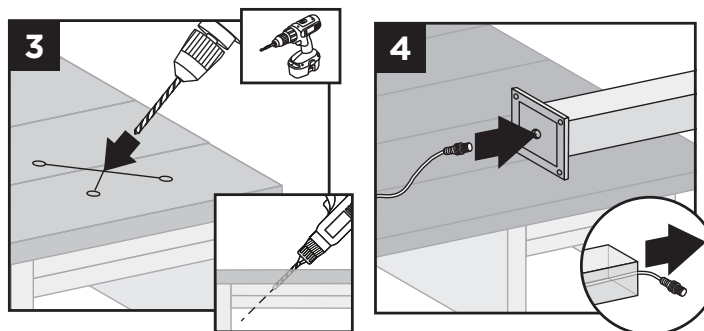


Installing Post Cap Lights

NOTE: Instructions shown below are for new deck installation and are shown **BEFORE** railing system has been installed.



1. Before attaching post to deck, locate placement of post and mark desired bolt locations.
2. Using a straight edge, mark an "X" between the four bolt locations.



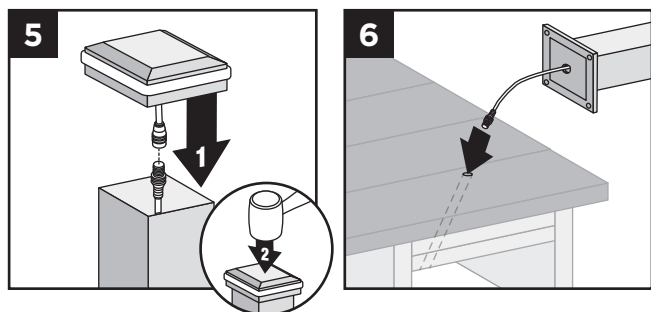
3. Using a 9/16" x 6" (or longer) drill bit, drill a diagonal hole through the decking and blocking. Ensure that the angle will allow wire to not be pinched by support plate under blocking (if using Trex ALPOSTHWDECK mounting kit). (See *Making Connections* section for details.)
4. Turn post upside down and fish 5' male-to-male wire (provided) through hole in baseplate.

HELPFUL TIPS

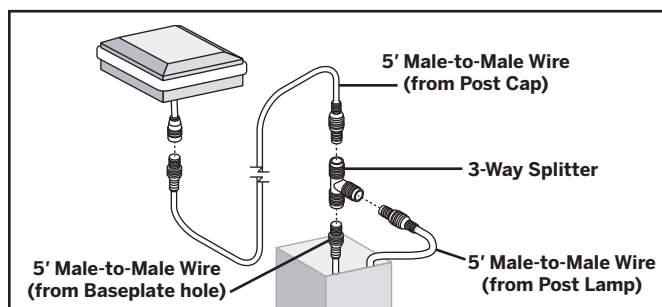
- » Leave slack in wire to make fixture terminations.
- » Post lamps work well at changes in levels of a deck—at the top or the bottom of the stairs, or in conjunction with post cap lights.
- » Splitters should be used at each post that has lights and depending on spacing in between each riser and recessed light.
- » Cap all unused female connections with caps provided or weather resistant silicone to prevent water damage or corrosion.
- » The splitter is cross linked so there is no specified plug for lights versus lead wires.
- » Leads attached to each light are approximately 5.5' (1.67 m) in length and have male terminals to plug into splitter.
- » Use a separate dimmer control for each light type for maximum control.
- » It is recommended to have power source on when installing lights to ensure all components work.

TREX® SIGNATURE™ POST CAP LIGHT INSTALLATION INSTRUCTIONS

HOW TO INSTALL TREX® SIGNATURE™ POST CAP LIGHT/CONTINUED



5. Connect the female connector on the post cap light to this wire and, using a rubber mallet, gently tap the cap onto the top of the post until it is secure.
6. Turn post over and carefully fish wire through hole created in Step 3 to underside of the deck. Ensure exit point of wire under blocking will not be pinched by ALPOSTHWDECK plate.



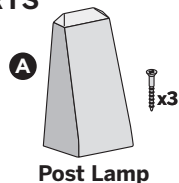
7. Mount post per instructions.

NOTE: If also connecting a Wedge Deck Rail light, a 3-way adapter and extra 5' male-to-male wire (not provided) can be used inside the post so that only one wire must be run through the hole in the base of the post (and post blocking). This is optional.

TREX® WEDGE DECK RAIL LIGHT INSTALLATION INSTRUCTIONS

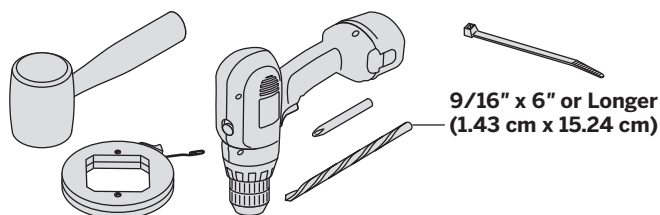
HOW TO INSTALL TREX® WEDGE DECK RAIL LIGHT

PARTS



- » 5ft, 10ft, 20ft, 40ft, and 60ft connection/extension wires sold separately (these are male-to-male connection wires).

TOOLS NEEDED

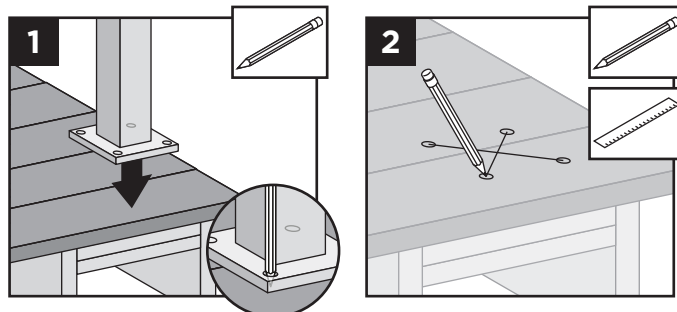


HELPFUL TIPS

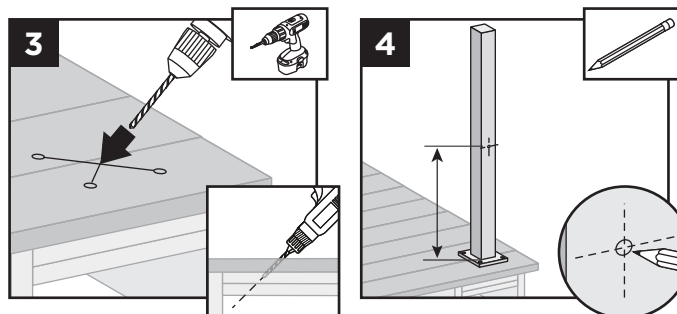
- » Leave slack in wire to make fixture terminations.
- » Wedge deck rail lights work well at changes in levels of a deck—at the top or the bottom of the stairs, or in conjunction with post cap lights.
- » Splitters should be used at each post that has lights and depending on spacing in between each riser and recessed light.
- » Cap all unused female connections with caps provided or weather resistant silicone to prevent water damage or corrosion.
- » The splitter is cross linked so there is no specified plug for lights versus lead wires.
- » Leads attached to each light are approximately 5.5' (1.67 m) in length and have male terminals to plug into splitter.
- » Use a separate dimmer control for each light type for maximum control.
- » It is recommended to have power source on when installing lights to ensure all components work.

Installing Post Lamps

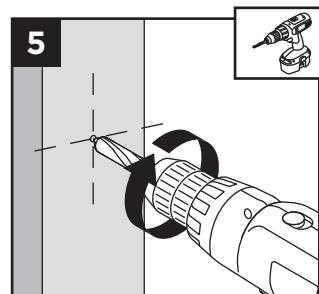
NOTE: Instructions shown below are for new deck installation and are shown **BEFORE** railing system has been installed.



1. Before attaching post to deck, locate placement of post and mark desired bolt locations.
2. Using a straight edge, mark an "X" between the four bolt locations.

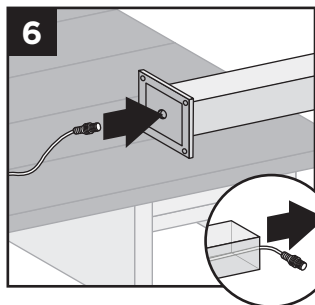


3. Using a 9/16" x 6" (or longer) drill bit, drill a diagonal hole through the decking and blocking. Ensure that the angle will allow wire to not be pinched by support plate under blocking (if using Trex ALPOSTHWDECK mounting kit).
4. Locate placement of wedge rail deck light. Mark entry point of the wire.
5. Drill 9/16" hole where wire will enter post.

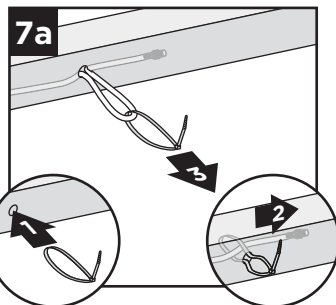


TREX® WEDGE DECK RAIL LIGHT INSTALLATION INSTRUCTIONS

HOW TO INSTALL TREX® WEDGE DECK RAIL LIGHT/CONTINUED



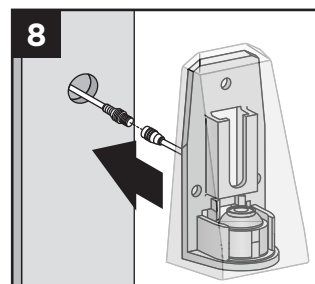
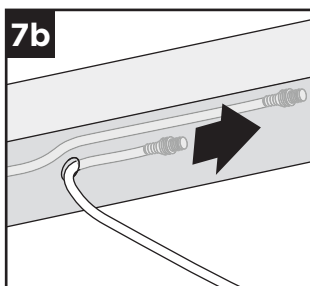
6. Turn post upside down and fish 5' male to male wire (provided) through hole in baseplate.



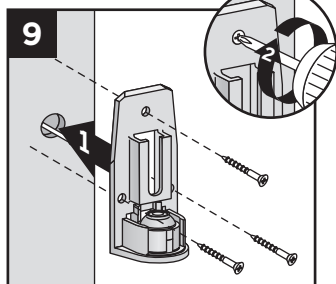
7a. If connecting a Wedge Deck Rail Light only, pull wire through hole.

TIP: Insert a zip-tie loop (or small grabber tool) through 9/16" hole. Fish wire through loop in zip-tie. Pull wire through hole with zip-tie.

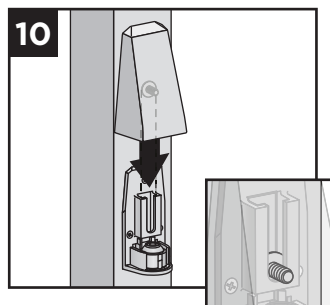
7b. If also connecting a Trex® Signature™ post cap light, and using the 3-way splitter (see the note at the end of this document), simply run one wire through the hole created in step 5 to the top of the post.



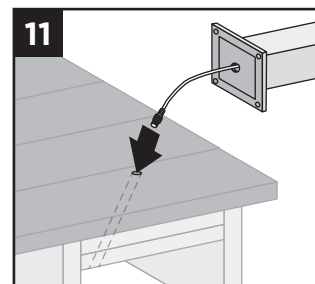
8. Connect male connector to female connector on light housing.



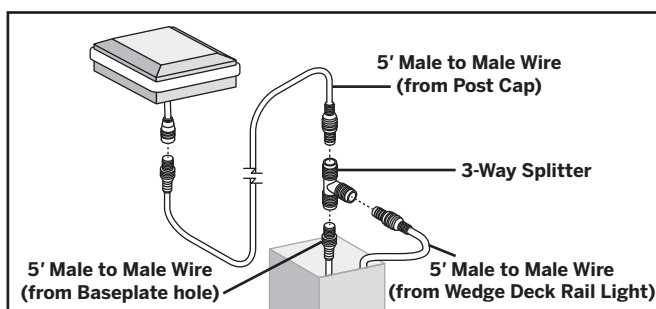
9. Place light and attach backing plate to post with three screws (provided).



10. Slide light cover down over backing plate, adjusting mounting screws as necessary to achieve a tight fit.



11. Turn post over and carefully fish wire through hole created in Step 3 to underside of the deck. Ensure exit point of wire under the blocking will not be pinched by ALPOSTHWDECK plate.



12. Mount post per instructions.

NOTE: If connecting a Trex® Signature™ post cap light as well, a 3-way adapter and extra 5' male-to-male wire (not provided) can be used inside the post so that only one wire must be run through the hole in the base of the post (and post blocking). This is optional.

TREX® LIMITED WARRANTY

Trex Company, Inc. (hereinafter “Trex”) warrants to the original purchaser (“Purchaser”) that, for the period of time set forth in the following sentence, under normal use and service conditions, Trex® products shall be free from material defects in workmanship and materials, and shall not split, splinter, rot or suffer structural damage from termites or fungal decay. The term of such warranty shall be twenty-five (25) years from the date of original purchase for a residential application, and ten (10) years from the date of original purchase for a commercial application. If a defect occurs within the warranty period, Purchaser shall notify Trex in writing and, upon confirmation by an authorized Trex representative of the defect, Trex’s sole responsibility shall be, at its option, to either replace the defective item or refund the portion of the purchase price paid by Purchaser for such defective item (not including the cost of its initial installation).

Notwithstanding the foregoing, (a), the term of the warranty for the LED lights and housing for Trex® DeckLighting™ shall be seven (7) years, the term of the warranty for the LED lights and housing for Trex® LandscapeLighting™ shall be five (5) years, and the term of the warranty for the dimmer, timer and transformer for both shall be three (3) years, in each case provided that a Trex transformer is used (with no warranty on any components if a Trex transformer is not used), and any other parts or accessories shall not be warranted; (b) with respect to hardware for the Trex Surroundings® gate (gate frame, hinges and screws), the term of the warranty shall be five (5) years, (c) with respect to Trex Decorative Balusters, the term of the warranty covering the paint coating shall be ten (10) years, and shall be prorated in the following manner: 100% replacement for the first five (5) years; and 50% replacement for the next five (5) years, and (d) this warranty shall not apply to Trex Elevations® steel deck framing, Trex® Signature™/Reveal® aluminum railing and TrexTrim™ (which each have separate warranties).

For purposes of this warranty, a “residential application” shall refer to an installation of the Product on an individual residence, and a “commercial application” shall refer to any installation of the Product other than on an individual residence.

TO THE FULLEST EXTENT PERMITTED UNDER THE LAW, THIS WARRANTY SHALL NOT COVER AND TREX SHALL NOT BE RESPONSIBLE FOR COSTS AND EXPENSES INCURRED WITH RESPECT TO THE REMOVAL OF DEFECTIVE TREX PRODUCTS OR THE INSTALLATION OF REPLACEMENT MATERIALS, INCLUDING BUT NOT LIMITED TO LABOR AND FREIGHT.

With respect to a residential application, this warranty may be transferred one (1) time, within the five (5) year period beginning from the date of original purchase by the Purchaser, to a subsequent buyer of the property upon which the Trex products were originally installed. With respect to a commercial application, this warranty is freely transferable to subsequent buyers of the property upon which the Trex products were originally installed.

To make a claim under this limited warranty, Purchaser, or the transferee, shall send to Trex, within the warranty period referred to above, a description of the claimed defect and proof of purchase, to the following address:

Trex Company, Inc.
Customer Relations
160 Exeter Drive
Winchester, VA 22603-8605

Trex does not warrant against and is not responsible for any condition attributable to: (1) improper installation of Trex products and/or failure to abide by Trex’s installation guidelines, including but not limited to improper gapping; (2) use of Trex products beyond normal use and service conditions, or in an application not recommended by Trex’s guidelines and local building codes; (3) movement, distortion, collapse or settling of the ground or the supporting structure on which Trex products are installed; (4) any act of God (such as flooding, hurricane, earthquake, lightning, etc.), environmental condition (such as air pollution, mold, mildew, etc.), staining from foreign substances (such as dirt, grease, oil, etc.), or normal weathering (defined as exposure to sunlight, weather and atmosphere which will cause any colored surface to gradually fade, chalk, or accumulate dirt or stains); (5) variations or changes in color of Trex products; (6) improper handling, storage, abuse or neglect of Trex products by Purchaser, the transferee or third parties; or (7) ordinary wear and tear.

No person or entity is authorized by Trex to make and Trex shall not be bound by any statement or representation as to the quality or performance of Trex products other than as contained in this warranty. This warranty may not be altered or amended except in a written instrument signed by Trex and Purchaser.

TO THE FULLEST EXTENT PERMITTED UNDER THE LAW, UNDER NO CIRCUMSTANCES WILL TREX BE LIABLE FOR INCIDENTAL OR CONSEQUENTIAL DAMAGES, WHETHER SUCH DAMAGES ARE SOUGHT IN CONTRACT, IN TORT (INCLUDING BUT NOT LIMITED TO NEGLIGENCE AND STRICT LIABILITY) OR OTHERWISE, AND TREX’S LIABILITY FOR NON-PERSONAL INJURY CLAIMS WITH RESPECT TO DEFECTIVE PRODUCTS SHALL IN NO EVENT EXCEED THE REPLACEMENT OF SUCH PRODUCTS OR REFUND OF THE PURCHASE PRICE, AS DESCRIBED ABOVE.

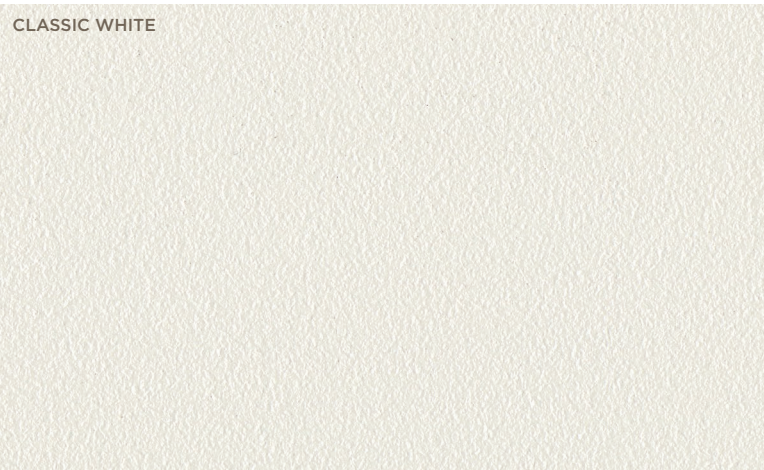
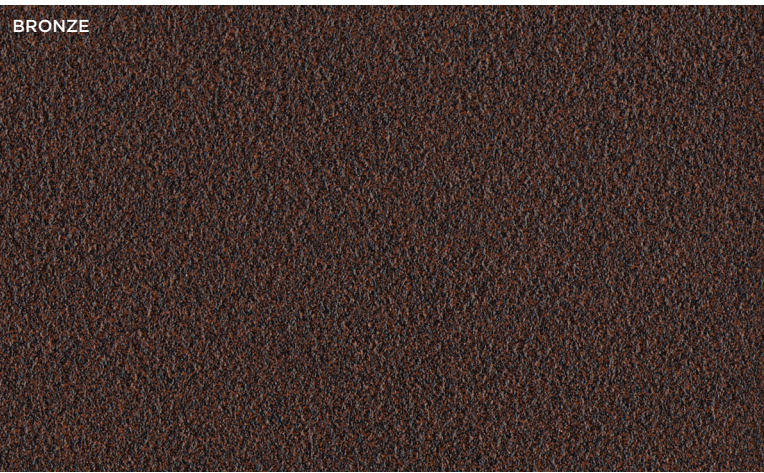
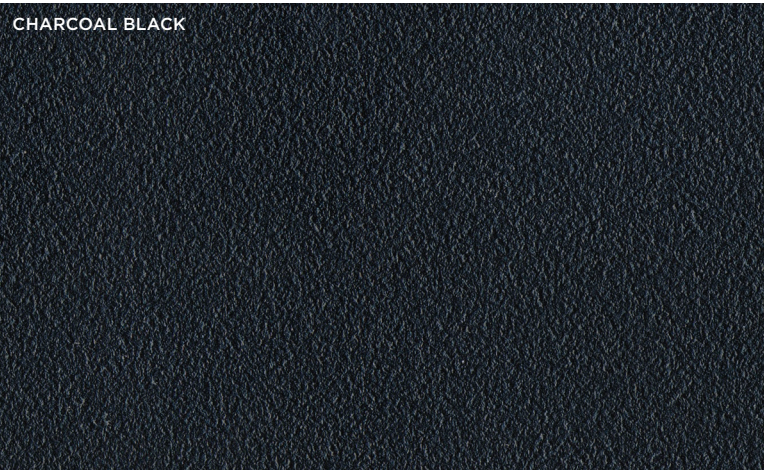
Some States or Provinces do not allow the exclusion or limitation of incidental or consequential damages, so the above limitation or exclusion may not apply to you. This warranty gives you specific legal rights, and you may also have other rights that vary from State to State or Province to Province.

Copyright © 2018 Trex Company, Inc.

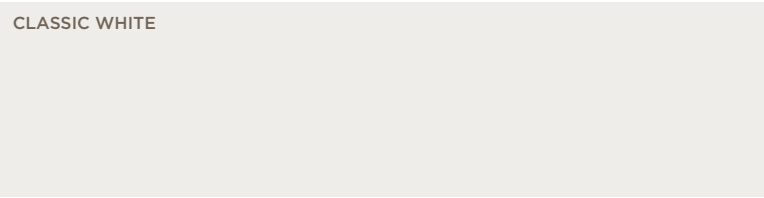
TREX OUTDOORLIGHTING COLOR & FINISH OPTIONS

DECK LIGHTING

RISER LIGHTS & DECK RAIL LIGHTS—TEXTURED FINISH



POST CAP LIGHTS—SMOOTH FINISH



Shown: Flat post cap lights
in Classic White
and stair riser lights



FRAMING | DECKING | RAILING | LIGHTING | FASCIA | STORAGE | FURNITURE | PERGOLA | DRAINAGE



FIND US ON



Visit **trex.com** or call **1-800-BUY-TREX**

© 2018 Trex Company, Inc. All rights reserved. Trex®, the Trex logo, Trex Transcend®, Trex® OutdoorLighting™, Trex® DeckLighting™, Trex® Signature™ and Trex LightHub® are either federally registered trademarks, trademarks or trade dress of Trex Company, Inc., Winchester, Virginia or its licensees.



High Performance

- Energy efficient CREE® LEDs give off long lasting illumination
- Dimmable glow matches the mood of any outdoor party or dinner
- Remains weather-proof and salt-air resistant in the toughest climates
- Offers total lighting control via a timer and optional dimmer with remote

Perennial Beauty

- Sophisticated fixtures create custom lighting effects and designs
- Ambient light improves the safety of surfaces and stairways
- Out of sight during the day, beautiful light every night

Trex® Through & Through

- Part of a complete Trex package
- Trex LightHub® connection system makes set-up a snap for DIYers
- Lighting builds into new decks or retrofits into existing spaces
- Earth-friendly LEDs are up to 9.1 times more efficient than incandescent lighting
- Protected under warranty for years of outdoor use



Visit deckingsolutions.com.au

or call (07) 3188 9193



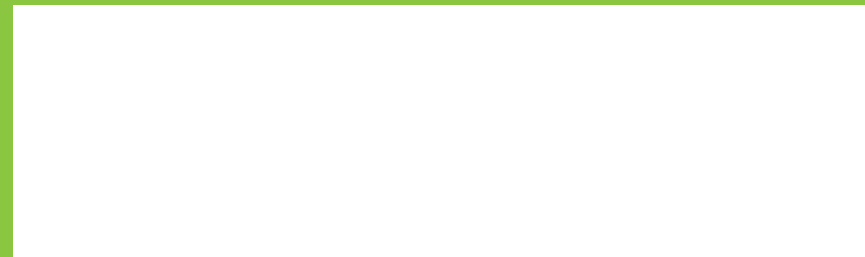
The World's #1 Decking Brand

Visit www.trex.com

FIND US ON



YOUR LOCAL SUPPLIER



Deck Lighting Systems

Designed to Shine

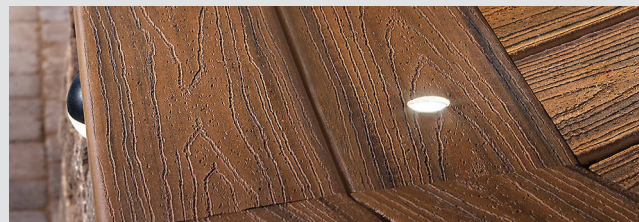


Recessed Deck Lights

Recessed Deck Lights from Trex efficiently light the way to, from and around your deck.

Installed flush on the deck board, these subtle dot lights can add functional beauty along the edge of a deck or the underside of a platform deck. Plus, Recessed Deck Lights can be installed with virtually any type of decking material, including Trex.

They beautifully match with the rest of Trex Deck Lighting, as well as our high-performance line of composite decking and railing, and can be quickly installed with the Trex LightHub connection system.



These subtle dot lights install flush on the deck boards—or almost any other material—to efficiently light the way.

Deck Lighting Features

■ MAKES DECKS SAFER

Deck lights provide a soft glow that lights the deck for easier wayfinding. They can be installed into the railing, stair risers or the deck itself.

■ WARM WHITE LIGHT

At 3000 degrees Kelvin, the light is warm white, adding a touch of coziness to any outdoor deck.

■ 75% LESS ENERGY USE

Deck lights use long-life LEDs from CREE, a worldwide leader in energy-efficient lighting. Compared to incandescent, Trex Deck Lighting uses significantly less energy.

■ 24/7 WEATHER-PROOF DURABILITY

Made with high-performance materials, Trex Deck Lighting can withstand years of tough weather. In fact, deck lights are water and salt air resistant, even in the harshest climates.

■ PROTECTED UNDER 7-YEAR LIMITED WARRANTY

All deck lights are backed by a limited warranty. Trex covers the LED lights and housing for seven years of use.

■ INSTALLS IN A SNAP

To avoid splitting wires, you can install deck lighting with the built-in Trex LightHub connection system. There's no wiring or electrical skills needed; just plug them in and enjoy.



Stair Riser Lights

- Installed into step risers, these lights are durable enough to handle years of passing foot traffic.
- Simple installation
- Available in three colours: Black, White and Bronze (Bronze is a special order)



Set up and control your deck lights with the Trex LightHub® connection system.

Installation videos are available at [trex.com](https://www.trex.com)

LIGHTING

Trex® Outdoor Lighting™

LIGHTING & DESCRIPTION

ITEM NUMBER

LANDSCAPE LIGHTING

- Rounded Path Light
- Stepped Path Light
- Well Light
- Multifunction Light
- Spotlight*



- BKRDPATH2PK, BZRDPATH2PK
- BKSPATH2PK, BZSPATH2PK
- BKWELL, BZWELL
- BKMULTI, BZMULTI
- BKSPOT, BZSPOT

*Includes: 36v Step-up Transformer & Female to Female Adapter

DECK LIGHTING

Pyramid or Flat Post Cap Light

- » 4" x 4" LED Post Cap Light
[4.55 in x 4.55 in (115 mm x 115 mm) actual internal dimensions]
Use with Trex 4 in Composite Railing Posts
- » 5.5 ft (1.67 m) Male LightHub Lead



Aluminum Post Cap Light

- » 2.5" x 2.5" LED Aluminum Post Cap Light
[2.6 in x 2.6 in (66 mm x 66 mm) actual internal dimensions]
Use with Trex 2.5 in Aluminum Railing Posts
- » 5.5 ft (1.67 m) Male LightHub Lead

PYRAMID CAPS

- BKPYLEDCAP4X4C
- WTPYLEDCAP4X4C
- FPPYLEDCAP4X4C
- THPYLEDCAP4X4C
- VLPYLEDCAP4X4C
- GPPYLEDCAP4X4C
- RSPYLEDCAP4X4C

FLAT CAPS

- BKSQLEDCAP4X4C
- WTSQLEDCAP4X4C
- FPSQLEDCAP4X4C
- THSQLEDCAP4X4C
- VLSQLEDCAP4X4C
- GPSQLEDCAP4X4C
- RSSQLEDCAP4X4C
- TEXTURED CHARCOAL BLACK:
BKALCAPLED25
- TEXTURED BRONZE: BZALCAPLED25
- TEXTURED WHITE: WTALCAPLED25

Deck Rail Light

- » LED Deck Rail Light
[2.75 in (69 mm) OD]
- » 5.5 ft (1.67 m) Male LightHub Lead



Wedge Deck Rail Light

- » LED Wedge Deck Rail Light
[1.875 in wide x 3 in high (47 mm x 76 mm) actual dimensions]
Compatible with all Trex Railing Posts
- » 5.5 ft (1.67 m) Male LightHub Lead



- TEXTURED BRONZE: BZLAMPLEDC
- TEXTURED CLASSIC WHITE: WTLAMPLEDC

LED Riser Lights

- » 4 LED Riser Lights
[1.25 in (31 mm) OD]
- » 5.5 ft (1.67 m) Male LightHub Lead



- TEXTURED CHARCOAL BLACK: BKRISERLED4PKC
- TEXTURED BRONZE: BZRISERLED4PKC
- TEXTURED CLASSIC WHITE: WTRISERLED4PKC

Recessed Deck Lights

- » 4 LED Recessed Lights
[1 in (25 mm) OD]
- » 5.5 ft (1.67 m) Male LightHub Lead



- RECESSLED4PKC

ACCESSORIES

Transformer with Timer

- » Output Voltage: 12VDC
- » Output Power: 100W or 30W
- » Output Current: 8.3A or 2.5A
- » Photo-Activated Timer
- » 20 ft (6.09 m) LightHub Wire Extension Cable



- 8.3A, 100W: 83DLTRANSFORMER
- 2.5A, 30W: 25DLTRANSFORMER

Multi-zone Transformer Adapter



- DL5TFSPPLIT1PK

Dimmer

- » Single Channel with Remote



- DLDIMMER

1 in (25 mm) Forstner Bit—Pack of 6



- DLBIT6PK

LightHub Accessories

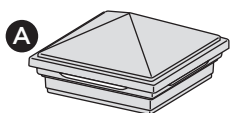
- » 3-Way Splitter
- » 6-Way Splitter
- » 5 ft (1.52 m) Wire Extension Cable
- » 10 ft (3.04 m) Wire Extension Cable
- » 20 ft (6.09 m) Wire Extension Cable
- » 40 ft (12.19 m) Wire Extension Cable
- » 60 ft (18.28 m) Wire Extension Cable
- » Female to Female Adapter



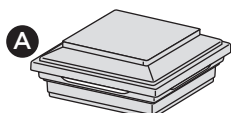
- DL3SPLIT6PK
- DL6SPLIT4PK
- DL5FTWR4PK
- DL10FTWR4PK
- DL20FTWR4PK
- DL40FTWR2PK
- DL60FTWR1PK
- DLFADAP6PK

HOW TO INSTALL TREX DECKLIGHTING

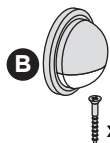
PARTS



Pyramid Post Cap Light



Flat Post Cap Light



Deck Rail Light



Riser Light



Recessed Deck Light



Splitter

- » 5ft, 10ft, 20ft, 40ft, and 60ft connection/extension wires sold separately (these are male-to-male connection wires).

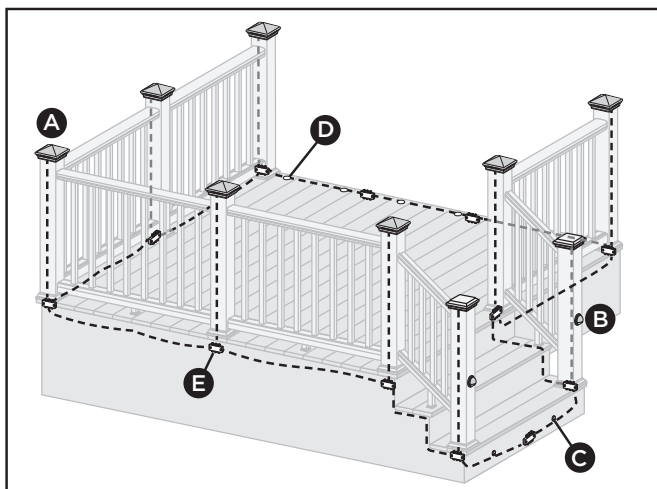
WARNING:

- » **DO NOT INSTALL DECKLIGHTING IN CLOSE PROXIMITY TO POOLS OR HOT TUBS AS CHEMICALS FROM THE WATER CAN DAMAGE LIGHTING FIXTURES.**
- » **DO NOT INSTALL WIRING UNDER HEAVY WEIGHT OR LOAD AS THIS CAN DAMAGE WIRING.**

NOTE: Avoid railing brackets and locations for deck rail lights when running wires up posts.

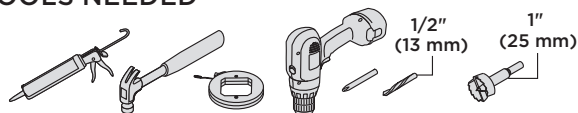
NOTE: It is recommended to install wiring and splitters before decking and railing have been installed. **DO NOT** run wires between joists and deck boards.

Lighting and Wiring Overview



NOTE: All wiring and splitters are mounted to the inside of framing. Picture above is a general representation of where to place them.

TOOLS NEEDED



HELPFUL TIPS

- » Please note that Trex lighting operates on DC power. **NEVER** mix AC and DC fixtures on the same circuit. Doing so will result in extremely premature fixture failure and is not covered by the Trex limited warranty. **You must use a Trex transformer on all Trex lighting installations.**
- » **Never fully drive staples when securing wire. Wire should move under staple.**
- » **ALWAYS** protect any wire that is close to the ground with conduit or wire loom to prevent rodent damage.
- » Cap all unused female connections with caps provided or weather-resistant silicone to prevent water damage or corrosion.
- » Each dimmer operates on a separate remote.
- » It is recommended to have power source installed and turned on when installing lights to ensure all components work.
- » When installing wiring, avoid extreme angles, pressure, or tension on the wiring, as this can cause pinching of the wiring and create a lighting failure.



HOW TO INSTALL TREX DECKLIGHTING/CONTINUED

General Information

- » Refer to www.trex.com for instructional videos on how to install Trex DeckLighting.
- » **USE TREX TRANSFORMER ONLY.** Use of any other transformer voids warranty.

TRANSFORMER CAPACITY BY TYPE

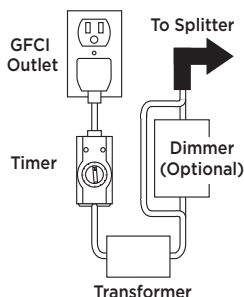
Type of Light	8.3A Transformer (83 DL TRANSFORMER)	2.5A Transformer (2.5 DL TRANSFORMER)
Riser	285	90
Recessed	285	90
Post Cap	85	22
Deck Rail	285	90

Above listing is for maximum number of each individual types of lights. If mixing and matching lighting, contact Trex to determine if more than one transformer is required.

Planning

NOTE: When designing your deck, plan locations of lights, power supply, timer, and dimmer. These should be accessible for service. Installing a GFCI outlet is **REQUIRED** to help prevent damage to lighting from electrical surges.

1. The dimmer remote will work in a 30' (9 m) radius of the unit.
2. Dimmer should be installed in a dry location.
3. Timer must be installed vertically with receptacle facing downwards. Timer must be at least 1' (.305 m) from ground level when installed as per federal safety code height regulations. Timer must be in view of the sun to use the dusk/dawn feature.

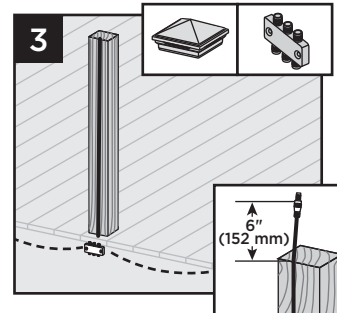
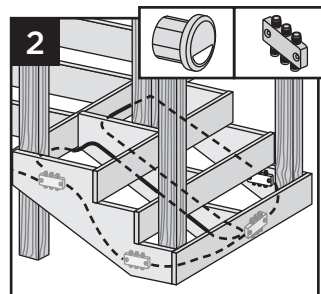
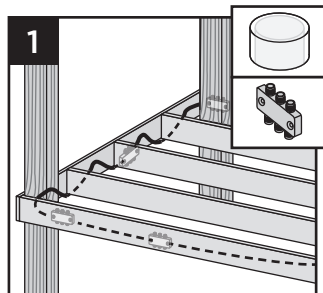


Installing Wiring

NOTE: It is recommended to install wiring and splitters before decking and railing have been installed.

- » Use male-to-male connection wire (lengths vary) that will connect to each required splitter.

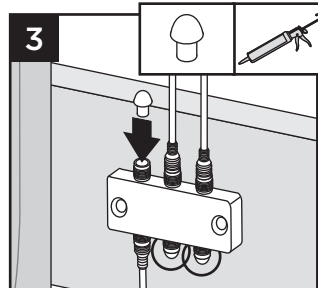
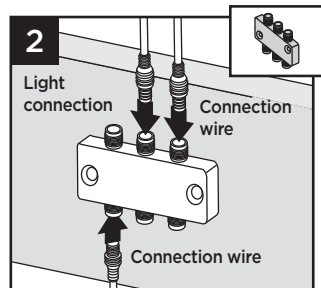
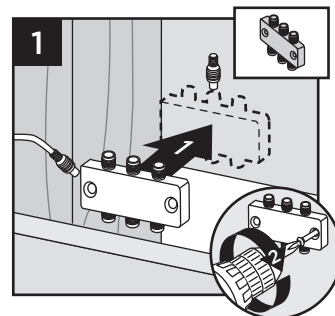
1. Wiring must be run under decking structure and behind stringers. **DO NOT** run wires between deck boards and joists. Staple to frame with cable staples at least 1/4" (6 mm) wide. **DO NOT** crush wire insulation with staples.



2. Wiring can be run under deck and behind risers. Staple to frame with cable staples at least 1/4" (6 mm) wide. **DO NOT** crush wire insulation with staples.
3. Remove 5' (1.52 m) lead wire that is connected to post cap and attach wire to post with male connection at top of post (female connection would be at bottom of post and connect into splitter). Avoid running wire on side of post where railing brackets or deck rail lights will be installed. Leave approximately 6" (152 mm) of lead at top to make connections. Staple to frame and posts with cable staples at least 1/4" (6 mm) wide. **DO NOT** crush wire insulation with staples.

Making Connections

1. Install splitters inside of framing using hardware provided. Install at every post base where lighting is present and depending on spacing in between each riser and recessed light.



2. Attach male lead from lights to female connections on splitter. Also attach male-to-male connection wires in between each splitter. Continue until all wiring from lights are attached to splitters and connector wires are attached in between splitters.
3. Cap off all unused female connections on splitters using caps provided or weather-resistant silicone.

HOW TO INSTALL TREX DECKLIGHTING/CONTINUED

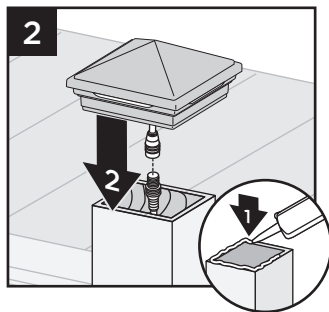
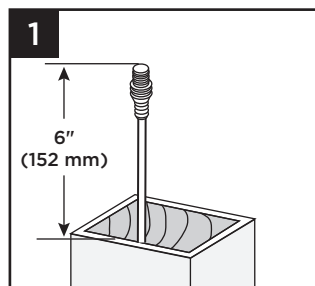
Timer Operation Instructions

1. Select the mode of operation:
 - » Dusk to Dawn
 - » 2-8 hours
 - » Always "ON"
 - » "OFF"

Program repeats daily. When power is flowing to lights, green light above POWER is on.

Installing Post Cap Lights

NOTE: Install post cap lights after the railing system, post sleeve skirt, and post sleeve have been installed.

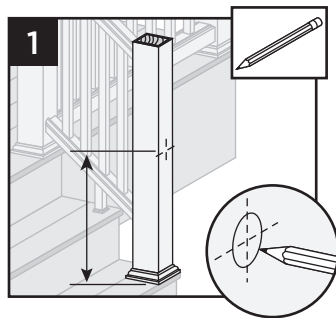


1. Connect male lead from wiring to female connector from cap. Also attach male-to-male connection wires in between each splitter. Continue until all wiring from lights is attached to splitters and connector wires are attached in between splitters. (See *Making Connections* section for details.)
2. After verifying wiring is correct by turning lights on, attach cap to top of post with silicone caulk.

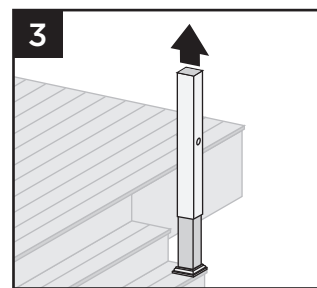
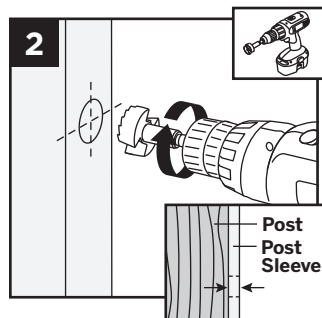
Installing Deck Rail Lights

NOTE: Instructions shown below are for new deck installation and are shown **BEFORE** railing system has been installed.

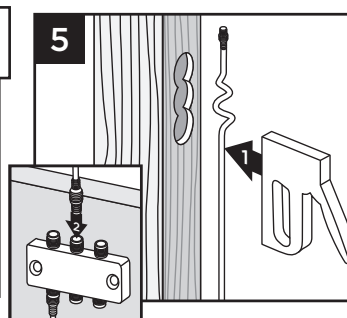
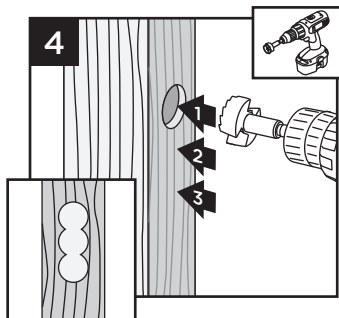
1. Place post sleeve over pressure-treated post and mark desired height, centered on post sleeve for deck rail light location.



NOTE: If deck boards are not installed yet, place a deck board on framing to ensure post sleeve is at correct height.

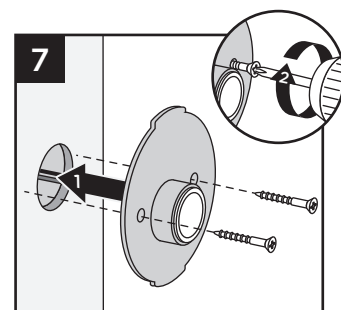
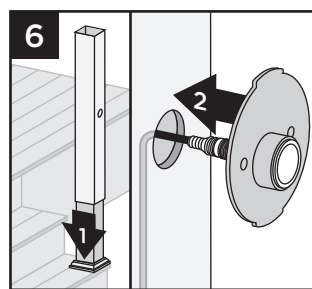


2. Drill a 1" (25 mm) hole through post sleeve. Drill deep enough to mark location on pressure-treated post.
3. Remove the post sleeve from the post.



4. Drill out existing hole on pressure-treated post 3/4" (19 mm) deep. Drill two additional holes vertically below main hole—this will allow space for wiring after post sleeve is attached.
5. Leave enough slack at top of lead wire and attach lead wire to post using staples. Attach lead wire to splitter under decking.

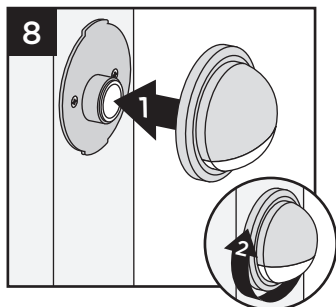
TIP: To hold lead wire in place at drilled-out location, use painters tape.



6. Slide post sleeve back over post. If using a post sleeve skirt, make sure to install the skirt first. Connect plug on deck rail light to lead wire and tuck wiring into previously drilled-out pockets on post.
7. Align holes for screws horizontally and attach fixture base to post with provided screws.

HOW TO INSTALL TREX DECKLIGHTING/CONTINUED

8. Line up polycarbonate lens with fixture housing. Twist onto fixture base. Continue until all wiring from lights is attached to splitters and connector wires are attached in between splitters. (See *Making Connections* section for details.)

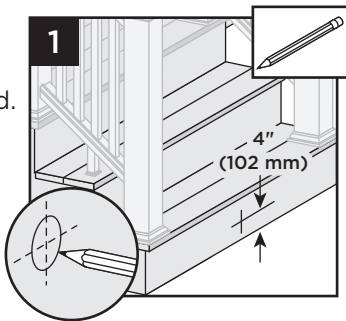


NOTE: If railing has already been installed, lead wires will need to be fished through the post sleeve to reach the desired location for the deck rail light. In some cases, if the provided lead wire does not fit (due to connector size), the wire connectors can be cut off and wire nuts can be used. Test lights with the power on. If lights that are wired with this method do not function, then switch the connector wires.

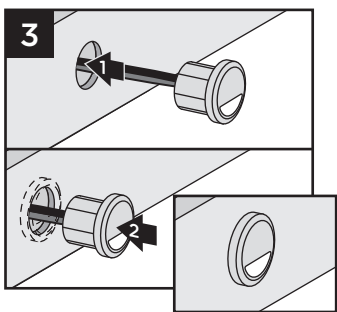
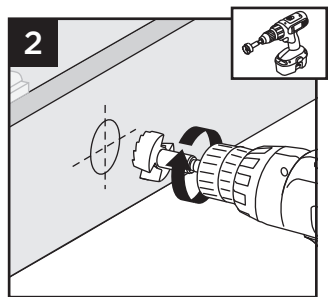
Installing Riser Lights

NOTE: Install riser lights after stairs and risers have been installed.

1. Mark locations for each light, generally 4" (102 mm) above tread. Consult local codes for lighting requirements.



NOTE: If possible, avoid locations over stringers as holes will be more difficult to create.



2. Drill a 1" (25 mm) diameter hole at least 1" (25 mm) deep into riser. If riser material is thicker than 1" (25 mm), use a 1/2" (13 mm) drill bit to create a passage for wires.
3. Thread wires through hole. Press light into hole, ensuring lens is horizontal. Make connections behind stairs from male lead wire from recessed light into female connection on splitter. Also attach male-to-male connection wires in between each splitter.

Continue until all wiring from lights is attached to splitters and connector wires are attached in between splitters. (See *Making Connections* section for details.)

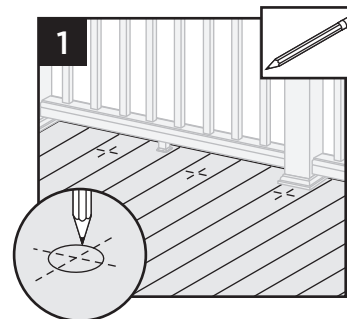
NOTE: DO NOT install riser light or deck rail light into top or bottom rails or balusters.

Installing Recessed Deck Lights

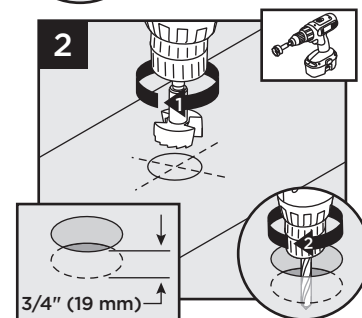
NOTE: Install recessed deck lights after installing decking.

1. Mark locations for lights in deck boards.

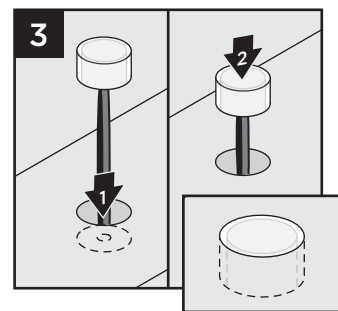
NOTE: If possible, avoid locations over joists as holes will be more difficult to create.



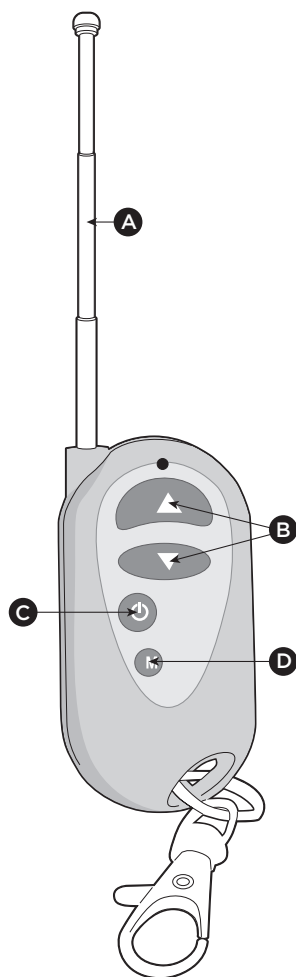
2. Drill a 1" (25 mm) diameter hole 3/4" (19 mm) deep into deck board. Hole cannot go all the way through deckboard or light will fall through. Make sure drill bit is perpendicular to board. Drill a 1/2" (13 mm) diameter hole in base of the first hole through deck board.



3. Thread wires through hole. **DO NOT pull LED into hole by pulling on wires. This may damage wires or LED.** Press light into hole until flush with surface. Make connections under deck from male lead wire from riser light into female connection on splitter. Also attach male-to-male connection wires in between each splitter. Continue until all wiring from lights is attached to splitters and connector wires are attached in between splitters. (See *Making Connections* section for details.)



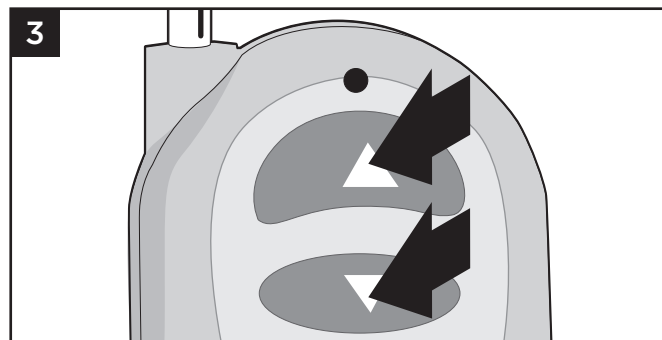
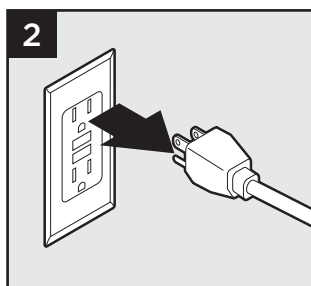
HOW TO PROGRAM DIMMER REMOTE



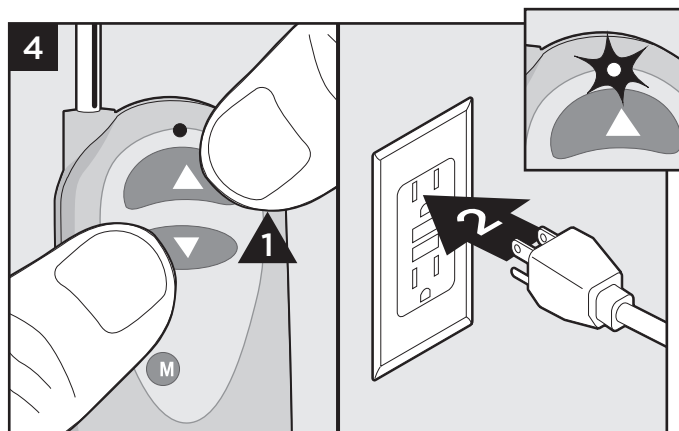
- A. **ALWAYS** keep antenna fully extended for maximum range.
- B. Up/Down arrows gradually dim or brighten lighting.
- C. On/Off button cycles lights ON/OFF.
- D. Mode button cycles through 3 preset dimming levels: High, Medium, Low, and Off.

NOTE: First, make sure the red light is illuminated on the remote. If there is no red light and the product is new, contact 1-800 BUY-TREX for a replacement. If the product is not new, the A27 battery is replaceable.

1. Install dimmer per instructions and make sure lights are ON and working properly.
2. Unplug the transformer to turn lights OFF.



3. Press and hold both the up and down arrow on the dimmer remote simultaneously.
4. With the dimmer arrow buttons held down, plug the

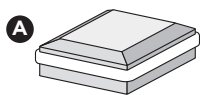


transformer back in. The lights should blink once to confirm programming.

5. Release the up and down arrows on the remote and test remote to confirm proper operation.

HOW TO INSTALL TREX® SIGNATURE™ CAP LIGHT (CAN ONLY BE USED ON TREX® SIGNATURE™ POSTS)

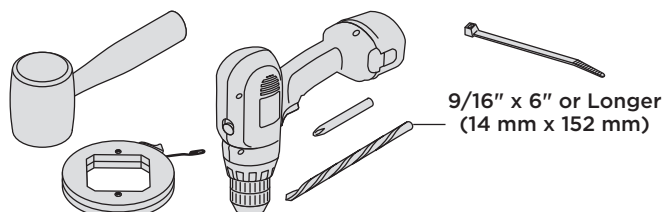
PARTS



Post Cap Light
(includes 5ft male-to-male wire)

- » 5ft, 10ft, 20ft, 40ft, and 60ft connection/extension wires sold separately (these are male-to-male connection wires).

TOOLS NEEDED



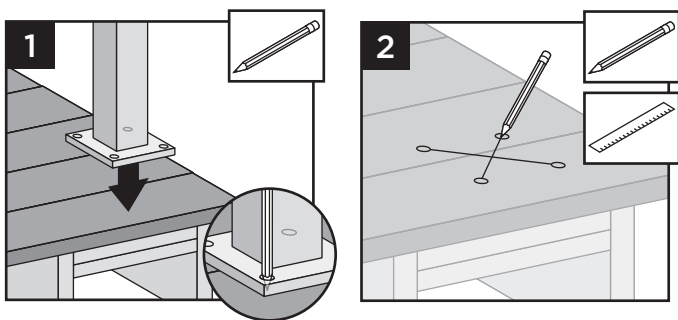
HOW TO INSTALL TREX® SIGNATURE™ CAP LIGHT/CONTINUED (CAN ONLY BE USED ON TREX® SIGNATURE™ POSTS)

HELPFUL TIPS

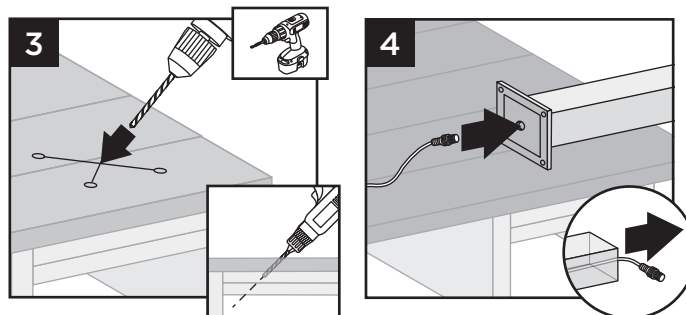
- » Leave slack in wire to make fixture terminations.
- » Post lamps work well at changes in levels of a deck—at the top or the bottom of the stairs, or in conjunction with post cap lights.
- » Splitters should be used at each post that has lights and depending on spacing in between each riser and recessed light.
- » Cap all unused female connections with caps provided or weather-resistant silicone to prevent water damage or corrosion.
- » The splitter is cross-linked so there is no specified plug for lights versus lead wires.
- » Leads attached to each light are approx. 5.5' (1.67 m) in length and have male terminals to plug into splitter.
- » Use a separate dimmer control for each light type for maximum control.
- » It is recommended to have power source on when installing lights to ensure all components work.

Installing Post Cap Lights

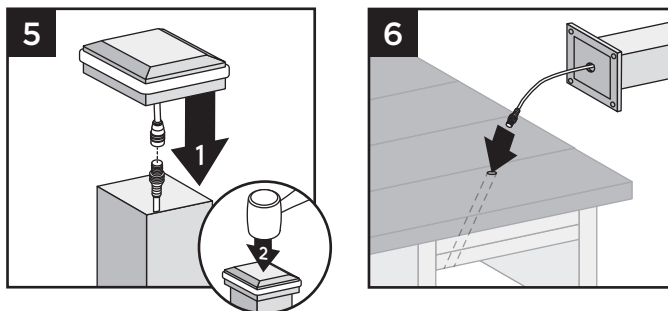
NOTE: Instructions shown below are for new deck installation and are shown **BEFORE** railing system has been installed.



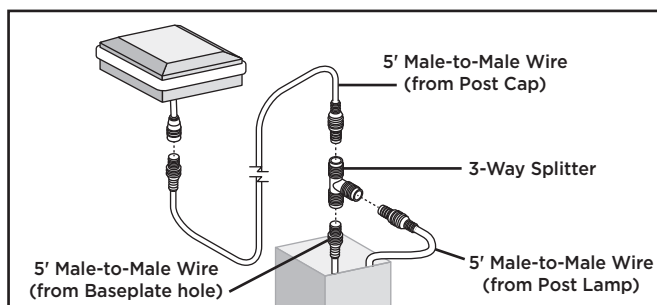
1. Before attaching post to deck, locate placement of post and mark desired bolt locations.
2. Using a straight edge, mark an "X" between the four bolt locations.



3. Using a 9/16" (14 mm) x 6" (152 mm [or longer]) drill bit, drill a diagonal hole through the decking and blocking. Ensure that the angle will allow wire to not be pinched by support plate under blocking (if using Trex ALPOSTHWDECK mounting kit). (See *Making Connections* section for details.)
4. Turn post upside down and fish 5' male-to-male wire (provided) through hole in baseplate.



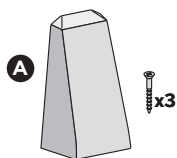
5. Connect the female connector on the post cap light to this wire and, using a rubber mallet, gently tap the cap onto top of post until it is secure.
6. Turn post over and carefully fish wire through hole created in Step 3 to underside of the deck. Ensure exit point of wire under blocking will not be pinched by ALPOSTHWDECK plate.
7. Mount post per instructions.



NOTE: If connecting a Trex Wedge Deck Rail Light as well, a 3-way adapter and extra 5' male-to-male wire (not provided) can be used inside the post so that only one wire must be run through the hole in the base of the post (and post blocking). This is optional.

HOW TO INSTALL TREX WEDGE DECK RAIL LIGHT (CAN ONLY BE USED ON TREX® SIGNATURE™ POSTS)

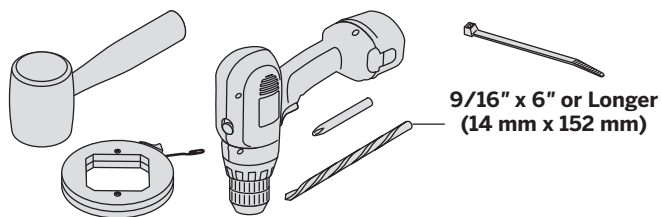
PARTS



Wedge Deck Rail Light
(includes 5ft male-to-male wire)

- » 5ft, 10ft, 20ft, 40ft, and 60ft connection/extension wires sold separately (these are male-to-male connection wires).

TOOLS NEEDED

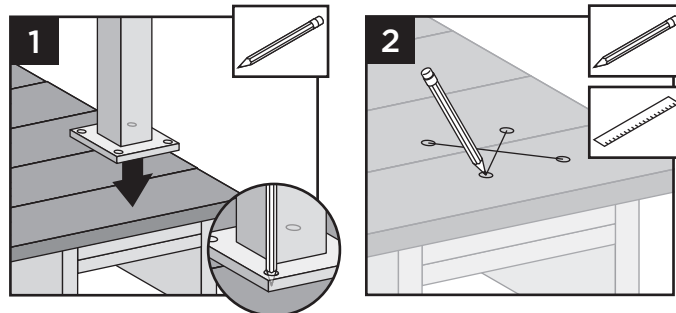


HELPFUL TIPS

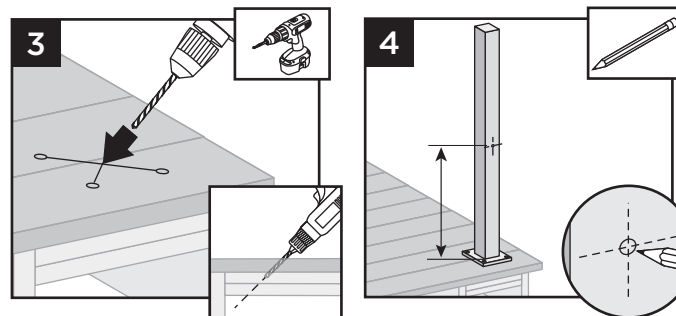
- » Leave slack in wire to make fixture terminations.
- » Deck rail lights work well at changes in levels of a deck—at the top or the bottom of the stairs, or in conjunction with post cap lights.
- » Splitters should be used at each post that has lights and depending on spacing in between each riser and recessed light.
- » Cap all unused female connections with caps provided or weather-resistant silicone to prevent water damage or corrosion.
- » The splitter is cross-linked so there is no specified plug for lights versus lead wires.
- » Leads attached to each light are approx. 5.5' (1.67 m) in length and have male terminals to plug into splitter.
- » Use a separate dimmer control for each light type for maximum control.
- » It is recommended to have power source on when installing lights to ensure all components work.

Installing Post Lamps

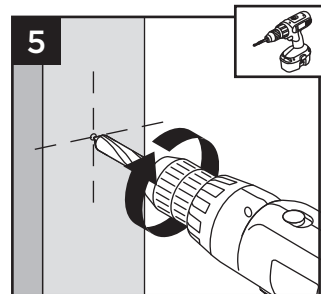
NOTE: Instructions shown below are for new deck installation and are shown BEFORE railing system has been installed.



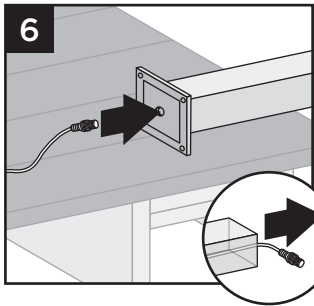
1. Before attaching post to deck, locate placement of post and mark desired bolt locations.
2. Using a straight edge, mark an "X" between the four bolt locations.



3. Using a 9/16" (14 mm) x 6" (152 mm [or longer]) drill bit, drill a diagonal hole through the decking and blocking. Ensure that the angle will allow wire to not be pinched by support plate under blocking (if using Trex ALPOSTHWDECK mounting kit).
4. Locate placement of post lamp. Mark entry point of the wire.
5. Drill 9/16" (14 mm) hole where wire will enter post.



HOW TO INSTALL TREX WEDGE DECK RAIL LIGHT (CAN ONLY BE USED ON TREX® SIGNATURE™ POSTS)

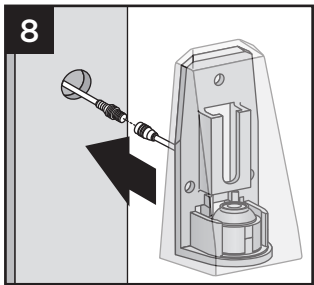
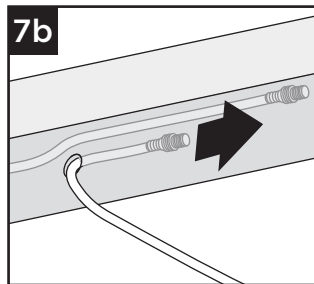


6. Turn post upside down and fish 5' male-to-male wire (provided) through hole in baseplate.

7a. If connecting a Wedge Deck Rail Light only, pull wire through hole.

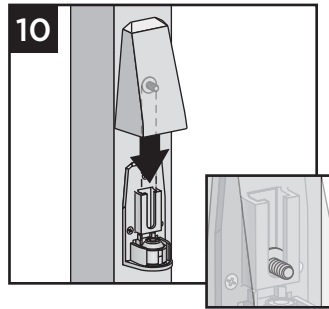
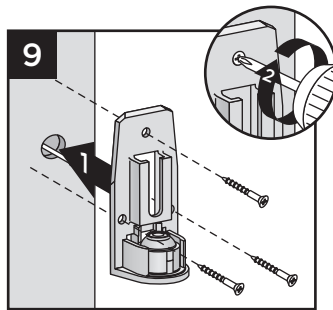
TIP: Insert a zip-tie loop (or small grabber tool) through 9/16" (14 mm) hole. Fish wire through loop in zip-tie. Pull wire through hole with zip-tie.

7b. If connecting a Trex® Signature™ post cap light as well, and using the 3-way splitter (see note after Step 12), simply run one wire through the hole created in Step 5 to the top of the post.



8. Connect male connector to female connector on light housing.

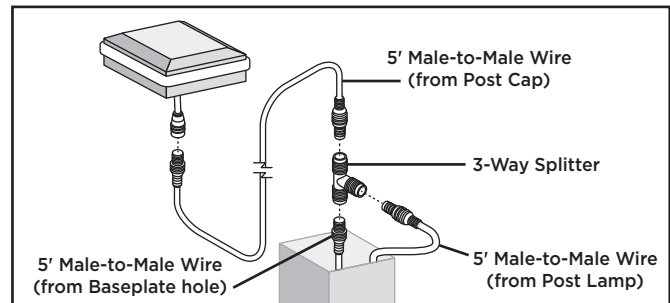
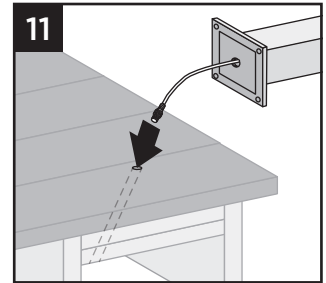
9. Place light and attach backing plate to post with three screws (provided).



10. Slide light cover down over backing plate, adjusting mounting screws as necessary to achieve a tight fit.

11. Turn post over and carefully fish wire through hole created in Step 3 to underside of the deck. Ensure exit point of wire under blocking will not be pinched by ALPOSTHWDECK plate.

12. Mount post per instructions.



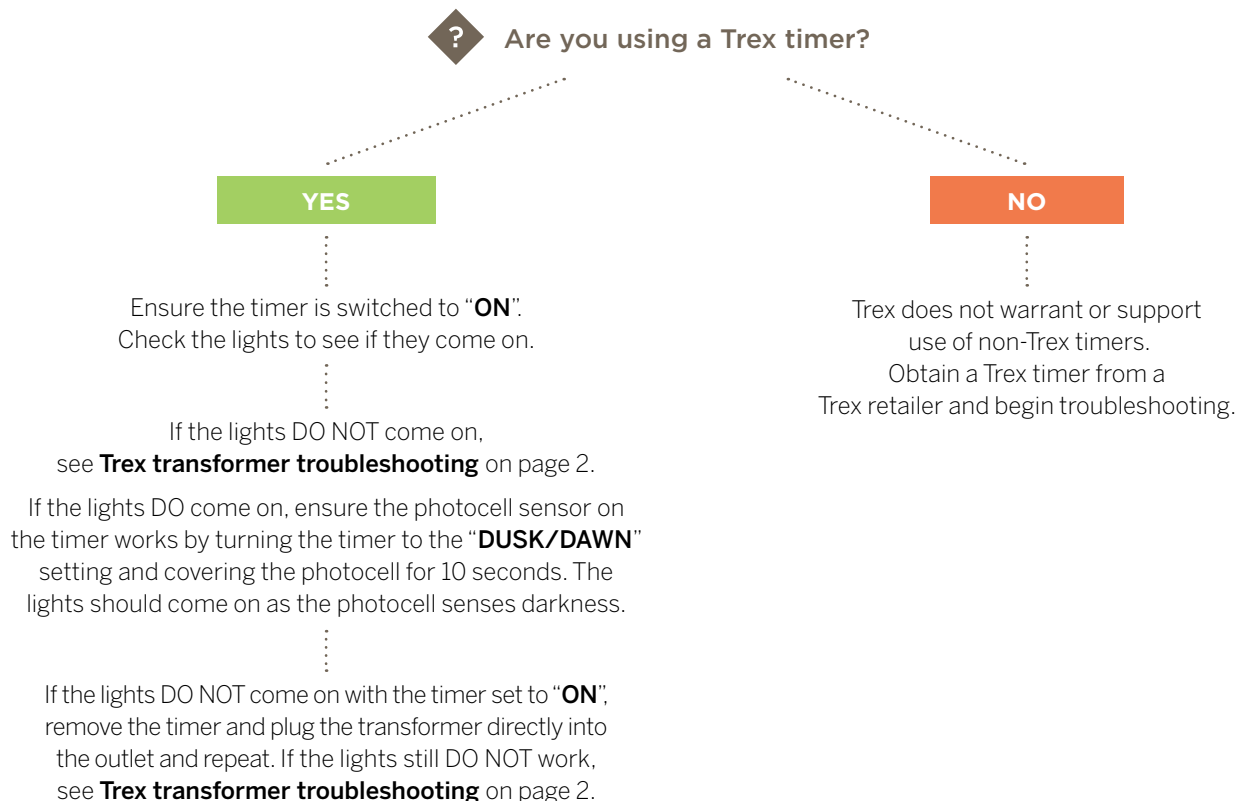
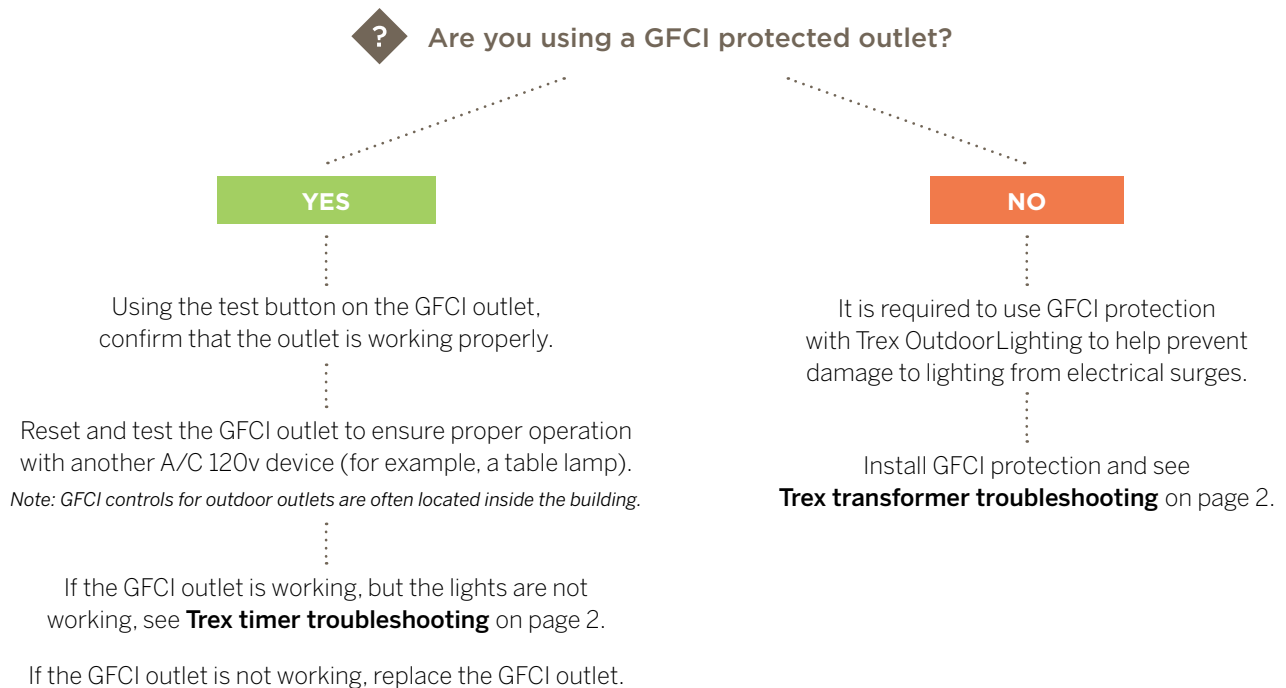
NOTE: If connecting a Trex® Signature™ post cap light as well, a 3-way adapter and extra 5' male-to-male wire (not provided) can be used inside the post so that only one wire must be run through the hole in the base of the post (and post blocking). This is optional.

TREX® OUTDOORLIGHTING™ TROUBLESHOOTING GUIDE

DECK LIGHTING

If you're experiencing a problem with any part of the Trex Deck Lighting system, please reference the troubleshooting flow charts below. Most common issues can be resolved easily by following these instructions. Should you require additional support, please call 1-800-BUY-TREX or send an email to question@trex.com.

If all of your Trex® lights are out...



If all of your Trex® lights are out...

? Are you using a Trex transformer?

YES

Test the transformer output.

If a dimmer is installed, remove it from the transformer.

Ensure the wire connected to the transformer is fully inserted and screwed on. Remove any installed wire nuts.

Test power output with a voltmeter, or by wiring a known good Trex light directly to the transformer leads and ensure polarity is correct.

If the test lights DO work, the transformer is working.

If the lights DO NOT work and the transformer is not outputting power it should be replaced.

If the Transformer is working but all lights are out, the connection of the 20' transformer wire is the problem, or the wiring is not connected correctly with wire nuts. For Trex LightHub® plug-and-play lighting, ensure that the female splitter pins are intact (and not bent). If the lights still don't work, try another port.

NO

Trex does not warrant or support the use of non-Trex transformers. Obtain a Trex transformer from a Trex retailer and begin troubleshooting

Any light fixture damage caused by the use of a non-Trex transformer will not be covered by the Trex Limited Warranty.

? Are you using a Trex dimmer?

YES

Older model dimmers have clip-on connections.

Check for continuity and polarity.

Newer style dimmers have a plug with screw-on connections.

Ensure the plug's connection is fully inserted and secure.

If the lights DO NOT come on using the dimmer remote, check if the dimmer is functioning using the buttons on the dimmer housing.

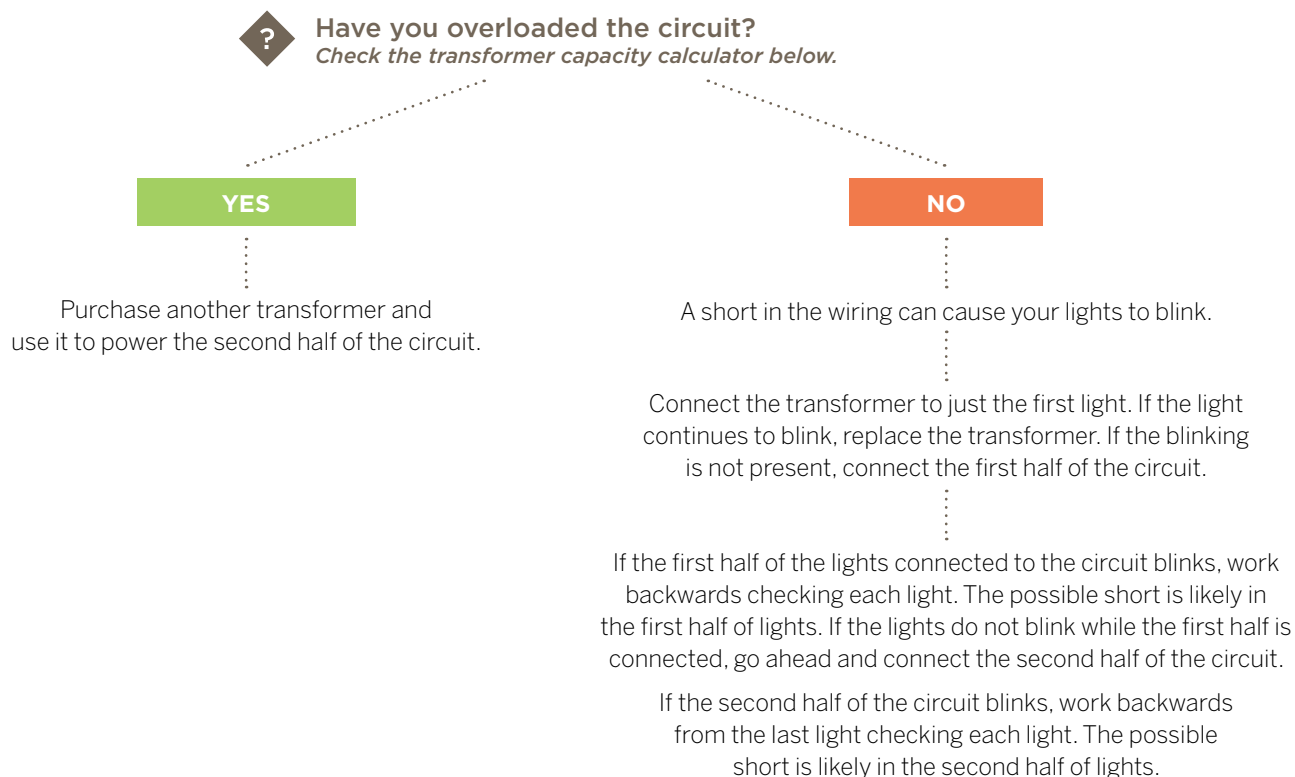
If the lights worked after the previous steps in the Transformer Troubleshooting section, but will not come on now, your dimmer is likely faulty.

Obtain a new Trex dimmer from a Trex retailer.

NO

Remove the non-Trex dimmer. Trex does not warrant or support the use of non-Trex dimmers. Obtain a Trex dimmer from a Trex retailer and begin troubleshooting.

If all of your Trex® lights are out, or your lights are blinking...



TRANSFORMER CAPACITY BY TYPE		
Type of light	5A transformer (DL TRANSFORMER)	2.5A transformer (2.5 DL TRANSFORMER)
Riser	180	90
Recessed	180	90
Post Cap	55	22
Deck Rail	180	90
Well Light	46	23
Path Light	31	16
Spot Light	7	N/A
Multifunction Light	31	16

Above listing is for maximum number of each individual types of lights.
If mixing and matching lighting, contact Trex to determine if more than one transformer is required.

If you think you have found a short...



General guidelines regarding shorts:

If your lighting is wired with wire nuts, make sure the wire is not damaged and that a staple has not penetrated the wire sheath. If you're using Trex LightHub® plug-and-play lights, remove the 5' male/male wire that connects the light to the splitter, and try a known working 5' male/male wire.

If one or more of the lights are out, but many are working...



Identify the style of your Trex light components. Older styled components have black and red wires, while the newer models have silver colored wires and LightHub plugs. Then, follow the directions below, specific to each type of Trex deck light.

POST CAP LIGHT

Make sure power is **ON**.

OLD STYLE: Lift the light and first check the connection to the circuit board on underside of the cap. If it's installed with wire nuts, remove the wire nuts and ensure the **RED/BLACK** light leads are connected to the main power wires and polarity is correct.

NEW STYLE: Ensure the female plug pins are intact (not bent), and the light strip is not damaged.

OLD STYLE: Reinsert the small white plug into the cap circuit board if it was disconnected.

NEW STYLE: Take the Post Cap to a known good male plug and test.

OLD STYLE: If the light strip on your Post Cap Light is damaged, it cannot be repaired.

NEW STYLE: If the light test is working on another male lead, check the 5' male/male lead connection at the splitter for bent pins or a disconnection.

Try another port on the splitter.

If the light still doesn't work, replace the 5' male/male wire.

RECESSED DECK LIGHT

OLD STYLE: Go under the deck and check that the **RED/BLACK** lead wires are connected to the main power wires.

NEW STYLE: Check that female pins are intact (not bent) and fully inserted into the male plug.

OLD STYLE: Check that the **RED/BLACK** wires at underside of the deck are connected to the main power wires.

NEW STYLE: Push the housing **UP** from the bottom and take the light to a known good male plug to test.

NEW STYLE: If your light is working when tested on another male lead, check the 5' male/male lead connection at the splitter for bent pins or a disconnection.

Try another port on the splitter.

If the light still doesn't work, replace the 5' male/male wire.

DECK RAIL LIGHT

OLD STYLE: Twist off the aluminum cover by hand and pull out the LED engine. Ensure the white plug is connected.

NEW STYLE: You will not be able to remove the LED engine. Remove the two screws and ensure that the female pins are intact (not bent) and fully inserted into the male plug.

OLD STYLE: Reconnect the white connector if disconnected. Check that the **RED/BLACK** wires at the underside of the deck are connected to the main power wires.

NEW STYLE: Connect the housing to a known good male plug and test.

NEW STYLE: If your light is working when tested on another male lead, check the 5' male/male lead connection at the splitter for bent pins or a disconnection.

Try another port on the splitter. If the light still doesn't work, replace the 5' male/male wire.

LED STAIR RISER LIGHT

OLD STYLE: Go under the deck and check that the **RED/BLACK** lead wires are connected to the main power wires.

NEW STYLE: Check that female pins are intact (not bent) and fully inserted into the male plug.

OLD STYLE: Reconnect the **RED/BLACK** leads to the main wire if disconnected.

NEW STYLE: Push housing **OUT** from back, and take the light to a known good male plug to test. If another riser lead is close by, simply it switch with the known good lead.

NEW STYLE: If your light is working when tested on another male lead, check the 5' male/male lead connection at the splitter for bent pins or a disconnection.

Try another port on the splitter.

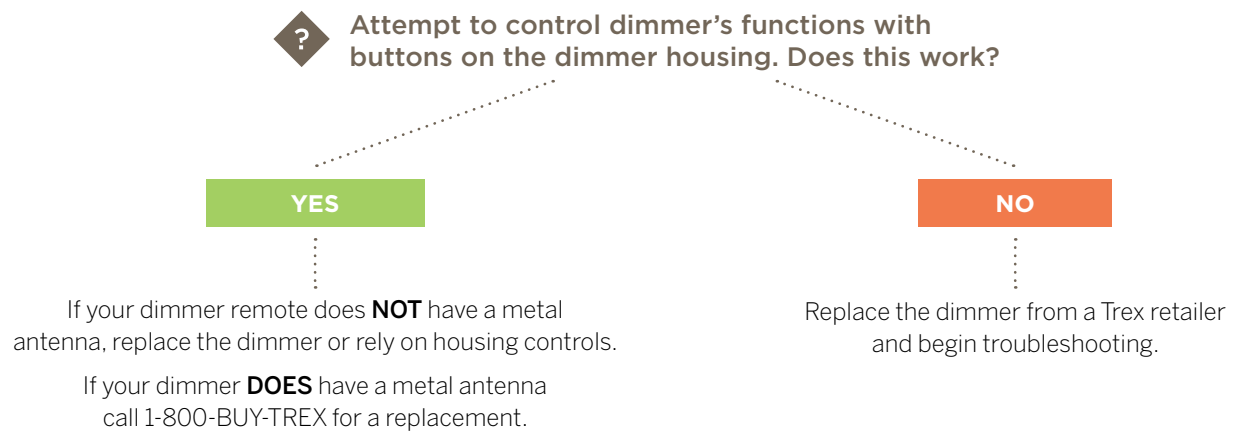
If the light still doesn't work, replace the 5' male/male wire.



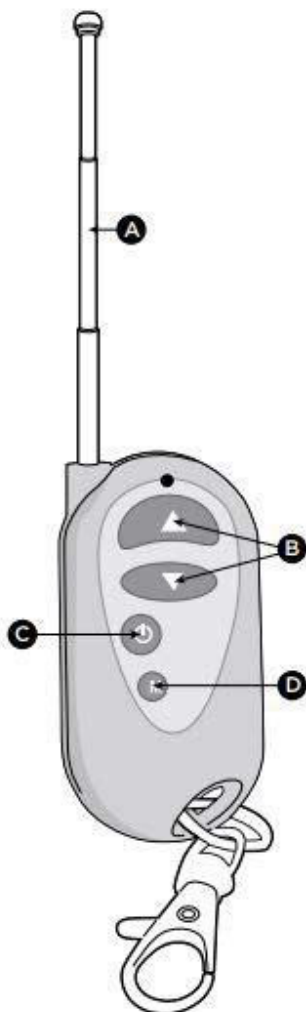
General guidelines regarding older styled light with RED/BLACK wire leads:

Any of these lights can be tested using a standard 9V battery. Ensure polarity is correct.

If your dimmer remote does not work...



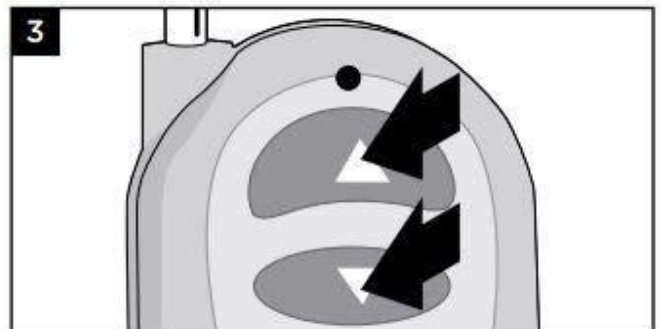
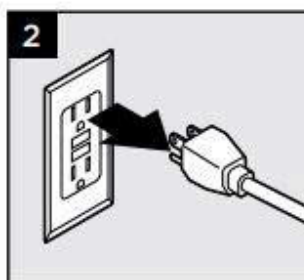
HOW TO PROGRAM DIMMER REMOTE



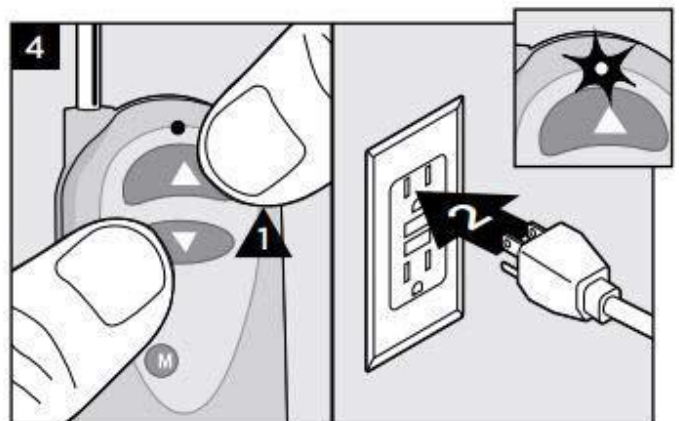
- A. **ALWAYS** keep antenna fully extended for maximum range.
- B. Up/Down arrows gradually dim or brighten lighting.
- C. On/Off button cycles lights ON/OFF.
- D. Mode button cycles through 3 preset dimming levels: High, Medium, Low, and Off.

NOTE: First, make sure the red light is illuminated on the remote. If there is no red light and the product is new, contact 1-800 BUY-TREX for a replacement. If the product is not new, the A27 battery is replaceable.

1. Install dimmer per instructions and make sure lights are ON and working properly.
2. Unplug the transformer to turn lights OFF.



3. Press and hold both the up and down arrow on the dimmer remote simultaneously.



4. With the dimmer arrow buttons held down, plug the transformer back in. The lights should blink once to confirm programming.
5. Release the up and down arrows on the remote and test remote to confirm proper operation.

TRANSFORMER CAPACITY BY TYPE		
Type of light	5A transformer (DL TRANSFORMER)	2.5A transformer (2.5 DL TRANSFORMER)
Riser	180	90
Recessed	180	90
Post Cap	55	22
Deck Rail	180	90
Well Light	46	23
Path Light	31	16
Spot Light	7	N/A
Multifunction Light	31	16