



Measure Twice Cut Once

JANUARY 2019

The builder's guide to all things timber and hardware.

A Little Bit About Nigel Shaw.

Nigel is a director of Wilson Timbers. Most of you probably know him, but for the ones who have yet to have had the pleasure he is the super chilled fella looking like Tom Hanks from Castaway. We mean this with no disrespect, but the reason for this is he probably has just hit the shores after a long time out adventuring on the seven seas. We sat down and spoke with Nigel here is what he said:

I am an adventurous entrepreneur who loves being on the ocean. If it's on or in the water, I want to do it. My

greatest passion though is being in the mountains back country skiing. I am a family man, and to me family is the most important thing in my life. I am loyal and trustworthy, a lover not a fighter. I am outside the box and speak my truths. I am spiritual and enjoy alternative things like meditation and most things hippie. For me work is a pleasure and a passion. I have untold gratitude for all of our beautiful customers and the amazing family I have gathered around me at Wilson Timbers. Love and gratitude to all.



In This Issue

- A few words from Nigel
- An easier way to install level subfloors when you have minimal clearance
- A premium long-lasting timber product
- A small peace of history down at the new wharf

Important Reminder: Summer Trading.

For the rest of summer remember we will open at 6am in order to help you beat the summer heat.

Our trading hours during the summer are:

6:00am - 4:00pm

Monday to Friday

Welcome To The Family.

We'd like to welcome:

- Ventia Boral Amey QLD J/V
- Condev Constructions PTY LTD
- Ordanga Constructions
- Advanced Buildings QLD Pty Ltd
- BM Building Services
- Ayes and Associates
- Contour Renovations & Building

To the Wilson Family. All of whom made their first purchase or opened an account with us last month. Thank you to everyone who purchased from us in the last 30 days.

How To Get Your Subfloor Right In Decks Over Concrete Slabs.

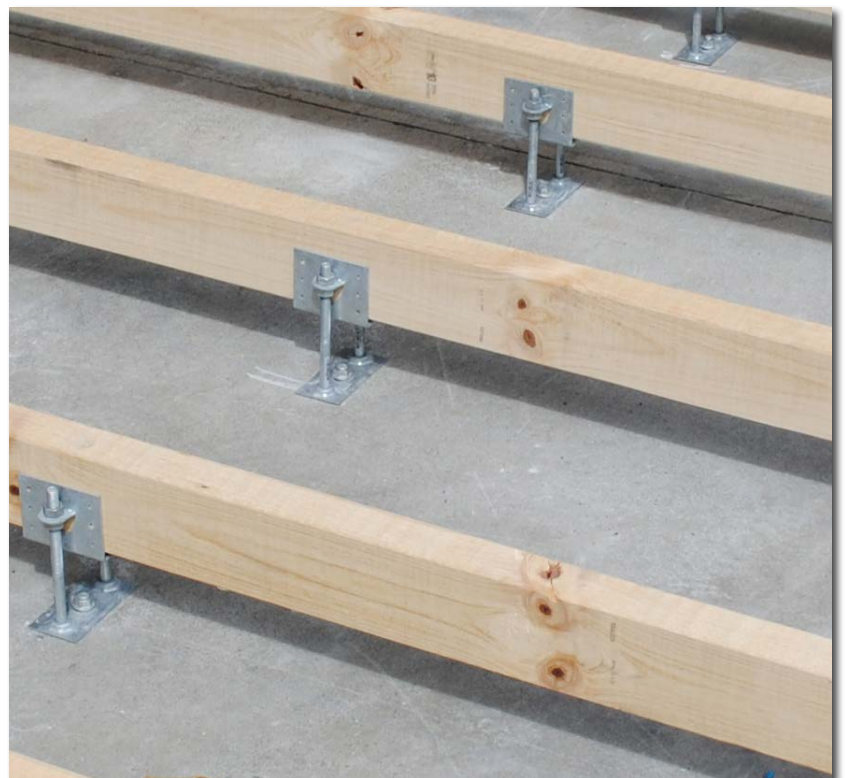
Most of the time, concreted outdoor areas have a natural fall for drainage. When clients decide they want to build a deck over the concrete to make the area nicer, that can be a real pain in the neck kind of job – finding high points, putting in packing and using different brackets at each anchor point so that you have a level subfloor to build off.

Thankfully KlevaKlip have created their Adjustable Joist Support to make these kinds of jobs easier. Adjustable Joist Supports are designed for building over concrete slabs where there is limited ground clearance. They are ideally suited where the step

down from the house to the slab is between 100mm and 220mm. They're compliant with Australian standard AS1170-1.

KlevaKlip's Adjustable Joist Supports are a baseplate and a bracket and the height of the joist is determined by the length of the bolt used. Once installed each joist support can be individually adjusted to create a level subfloor for you to build off.

Using KlevaKlip's Adjustable Joist Supports keeps your joists out of any water that can build up below your deck – preventing rot from setting in, causing call backs and warranty work.



Real Timber That Lasts (Almost) Forever

Finding and supplying sustainable timber is a real passion of ours here at Wilson Timbers. We do the hard work so that you know that what you are getting is top quality and it will last while being sustainable at the same time – so we aren't wiping out rain forests so that your clients can have nice timber. That's really important to us.

Recently we discovered Accoya. Accoya is not a timber species, it's actually a timber treatment that enhances the durability and dimensional stability of fast growing and abundantly available certified wood species.

- Accoya reduces swelling and shrinkage by 75% or more – so that doors and windows can be easily opened the year round – reducing maintenance costs
- Class 1 durability: It lasts for 50 years above ground and 25 years in ground – it is more durable than teak. Trada states that Accoya has a 70 year minimum service life
- The improved stability means that coatings last twice as long compared to other timber species
- It is INDIGESTABLE to insects including termites
- It is as easy to work with as any other timber species

- It looks just like normal wood
- It is non-toxic and recyclable

How Do They Do All This?

All of this is achieved through a simple process called Acetylation. This occurs naturally in all timber. In Accoya, an industrial process causes additional Acetylation to a consistent level which creates identical quality – like it's a manufactured product. Acetylation adds to the strength and enhances the durability of the timber. Acetylation removes the chemicals in the timber that soak up moisture causing swelling/shrinkage and the chemicals that cause rot to set in.

Accoya has been tested around the world including New Zealand, USA, UK, Sweden, Malaysia, Indonesia, Russia, the Netherlands, Germany and Japan and is considered the benchmark for comparing how effective timber treatments and modification are.

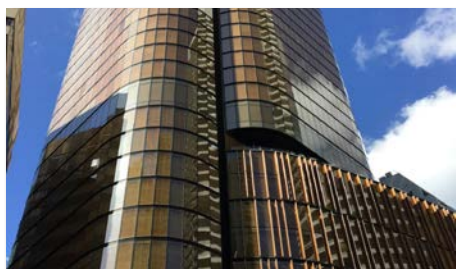
Our supplier stocks all the different sizes of feed stock so your wish is their command. We can get you Accoya joists, bearers, cladding, decking and more – whatever you need. For more information be sure to get a copy of the Accoya literature – we're barely scratching the surface here of what it can do. Talk to your rep to get more information.

A Few People Forgot We Can Do Windows.

In August we publicly launched our partnership with Dowell Windows. We've been getting loads of interest, quotes and orders from all the members of the Wilson family.

However there are members of the Wilson family who haven't even asked for a quote yet. If you are new or forgot somehow – any time you need a quote for windows we can do your quote for you from the plans – and when you place an order with us we'll handle the delivery logistics for you as well.

If you would like a quote for windows on your next project just send your rep the plans and they will take care of the rest for you.



Builders Coach Meet Up.

Back in August we hosted Kurt The Builder's Coach who did a day on how to become a million dollar builder. A lot of the attendees loved the event and controversially said that it was better than our annual golf day.

During the breaks and immediately after the event as we made our way to the bar, there were quite a number of builders who were looking for a group of like-minded builders to bounce ideas off and discuss trends within the industry a few times a year.

This led us to starting a group who would meet 'informally' for lunch a few times a year. We are looking at doing the first of these meetings in late Feb at the Norman, at say 1pm?

If you'd like to come along can you let Erin know by emailing her at erin@wilsontimbers.com so that you can be part of setting the date.

Those Are 'Our' Picnic Tables At The Howard Smith Wharves!

Everyone at Wilson Timbers/ Outdoor Structures Australia were very excited when we won a tender to supply 40 of our 'Blaxland' picnic tables. It was cool to see a semi load of picnic tables loaded up and driving off into the sunset. 23 tons of top quality, sustainably grown Australian hardwood.

If everything has gone to schedule the tables will be assembled, installed and ready for public use as you read these words. The next time you are down at the wharves sitting at a picnic table, possibly enjoying a beverage or two, then remember where those tables came from. We certainly will.



WILSON TIMBERS
The Hardwood & Decking Specialists

Wilson Timbers
13 Davey St
Moorooka
Qld 4105
Ph: (07) 3277 1988
E: info@wilsontimbers.com
Web www.wilsontimbers.com